

IMPORTANT JEWELS

NEW YORK | 6 JUNE 2019



Sotheby's EST.
1744



FRONT COVER
LOT 90
BACK COVER
LOT 197
THIS PAGE
LOTS 83 & 204

IMPORTANT
JEWELS





IMPORTANT JEWELS

**AUCTION IN NEW YORK
6 JUNE 2019
SALE N10092
10:00 AM**

**ALL EXHIBITIONS FREE
AND OPEN TO THE PUBLIC**

Friday 31 May
10 am-5 pm

Saturday 1 June
10 am-5 pm

Sunday 2 June
1 pm-5 pm

Monday 3 June
10 am-5 pm

Tuesday 4 June
10 am-5 pm

Wednesday 5 June
10 am-5 pm

1334 York Avenue
New York, NY 10021
+1 212 606 7000
sothebys.com

FOLLOW US @SOTHEBYS
#SOTHEBYSJEWELS

275
YEARS

EST. 1744

Sotheby's EST. 1744

Specialists for this Auction



David Bennett
Worldwide Chairman
International Jewelry Division
+1 41 22 908 4842
david.bennett@sothebys.com



Gary Schuler
Chairman,
North and South America
+1 212 606 7095
gary.schuler@sothebys.com



Carol Elkins
Senior Specialist
+1 212 606 7062
carol.elkins@sothebys.com



Frank Everett
Sales Director
+1 212 894 1902
frank.everett@sothebys.com



Catharine Becket
Senior Specialist
+1 212 894 1027
catharine.becket@sothebys.com



Robin Wright
Senior Specialist
+1 212 894 1246
robin.wright@sothebys.com



Alexander Eblen
Senior Specialist
+1 212 894 1742
alexander.eblen@sothebys.com



Quig Bruning
Specialist
+1 310 786 1860
quig.bruning@sothebys.com



Kendall Reed
Specialist
+1 212 894 1137
kendall.reed@sothebys.com



Joanna Gong
Specialist
+1 917 200 1682
joanna.gong@sothebys.com



Anna Ruzhnikov
Associate Cataloguer
+1 212 894 1041
anna.ruzhnikov@sothebys.com



Vivian Chen
Associate Cataloguer
+1 212 894 1918
vivian.chen@sothebys.com



Joanna Wheeler
Associate Cataloguer
+1 212 894 1491
joanna.wheeler@sothebys.com

Specialists and Auction Enquiries

For further information on lots in this auction please contact any of the specialists listed below.

SALE NUMBER

N10092 "TEMPLE"

BIDS DEPARTMENT

+1 212 606 7414

FAX +1 212 606 7016

bids.newyork@sothebys.com

Telephone bid requests should be received 24 hours prior to the sale. This service is offered for lots with a low estimate of \$5,000 and above.

CONSULTANT

Lexi Yost

HEAD OF MAGNIFICENT JEWELS SALES

Catharine Becket

catharine.becket@sothebys.com

+1 212 606 7392

FAX +1 212 606 7014

SALE COORDINATOR

Orly Brooker

orly.brooker@sothebys.com

+1 212 606 1507

FAX +1 212 606 7014

POST SALE SERVICES

Rebecca Kraus

Post Sale Manager

rebecca.kraus@sothebys.com

+1 212 606 7444

PAYMENT, DELIVERY AND COLLECTION

+1 212 606 7444

FAX +1 212 606 7043

uspostsaleservices@sothebys.com

CATALOGUE PRICE

\$45 at the gallery

FOR SUBSCRIPTIONS CALL

+1 212 606 7000 USA

+44 (0)20 7293 5000

for UK & Europe

CONDITION REPORTS

Sotheby's Jewelry department is pleased to offer to potential purchasers Condition Reports of the lots in this catalogue.

A Condition Report is an opinion describing in more depth the lot with regards to, but not limited to, the general condition, quality of stones and/or other relevant information.

Please contact:

Nora Clarke

newyorkjewels@sothebys.com

+1 212 894 1506

PHOTOGRAPHY

SquareMoose

New York

+1 212 643 2505





THIS PAGE
LOTS 118 & 148
OPPOSITE PAGE
LOT 1

Contents

3	AUCTION INFORMATION
5	SPECIALISTS AND AUCTION ENQUIRIES
10	IMPORTANT JEWELS: LOTS 1-208
139	ABSENTEE BID FORM
141	CONDITIONS OF SALE
142	TERMS OF GUARANTEE ADDITIONAL TERMS AND CONDITIONS FOR LIVE ONLINE BIDDING
143	BUYING AT AUCTION
145	SELLING AT AUCTION SOTHEBY'S SERVICES INFORMATION ON SALES AND USE TAX IMPORTANT NOTICES
147	INTERNATIONAL DEPARTMENTS
148	DIAMOND LIST
149	COLORED STONE LIST
150	DIAMOND CLARITY GRADING GLOSSARY OF TERMS
151	DIAMOND COLOR GRADING RING SIZE CHART
152	INDEX OF MAKERS









1

1

PROPERTY OF A PALM BEACH LADY

**GOLD, ROCK CRYSTAL AND EMERALD
BROOCH, DAVID WEBB**

Designed as an elephant, composed of textured gold, the body set with carved rock crystal, the eye set with an emerald cabochon, gross weight approximately 59 dwts, *signed David Webb*.

US\$ 4,000-6,000



2

PROPERTY OF A PALM BEACH LADY
**SUITE OF GOLD AND ROCK CRYSTAL
JEWELS, DAVID WEBB**

Comprising: a gold chain necklace set with an oval-shaped carved rock crystal, length 19¼ inches with detachable 2¾ inch section; a similarly-set ring carved with a checkered

pattern, size 5¼; and a pair of similarly-set earclips carved with a scalloped pattern; total gross weight approximately 209 dwts, each signed Webb.

US\$ 12,000-15,000



3

3

PROPERTY OF A PALM BEACH LADY
**GOLD NECKLACE, BRACELET AND
PAIR OF EARCLIPS, ILIAS LALAOUNIS**

The necklace composed of fluted gold scalloped links, *length 16 inches*; the hinged cuff-bracelet composed of textured openwork gold, centering a sodalite cabochon topped

with a gold Minoan-style figure, *internal circumference 5¾ inches*; the pair of earclips of bull's eye design, composed of hammered gold; total gross weight approximately 232 dwts, *each with maker's marks for Ilias Lalaounis*. With signed box.

US\$ 10,000-15,000



4

4

PROPERTY OF A LADY
GOLD AND CHALCEDONY NECKLACE,
BOUCHERON, FRANCE

Composed of ropetwist gold and green chalcedony links, length 36 inches, signed Boucheron, with French workshop and British import marks; circa 1975.

US\$ 5,000-7,000



5

PROPERTY OF A PRIVATE COLLECTOR
**GOLD AND DIAMOND PENDANT-
NECKLACE, DAVID WEBB**

The pendant of ropetwist design, set with round diamonds, suspended from a hammered gold chain, gross weight approximately 157 dwts, length 27 inches, pendant detachable for wear as a brooch, each signed Webb.

US\$ 25,000-35,000



6

6

PROPERTY FROM A SAN FRANCISCO PRIVATE COLLECTION

**EMERALD AND DIAMOND RING,
VAN CLEEF & ARPELS**

Of floral design, set with a round emerald, framed with round diamonds and textured gold petals, *partially signed VC&A, partially numbered*. With signed box.

US\$ 5,000-7,000



7

7

PROPERTY OF A LADY

**GOLD AND EMERALD CUFF-BRACELET,
DAVID WEBB**

Designed as a leopard, the body composed of textured gold and polished spots, the eyes set with pear-shaped cabochon emeralds, within a hammered gold ground, gross weight approximately 76 dwts, *internal circumference 6½ inches, signed Webb*.

US\$ 7,000-9,000



8



8

8

PROPERTY FROM AN AMERICAN COLLECTION
**GOLD AND DIAMOND CLIP-BROOCH,
DAVID WEBB**

Of floral design, composed of hammered gold leaves, centered on a cluster of round diamonds, gross weight approximately 36 dwts, signed David Webb.

US\$ 6,000-8,000

9

PROPERTY FROM A WEST COAST FAMILY
**SUITE OF AMBER AND GOLD JEWELS,
PAUL FLATO**

Comprising: a necklace, a pair of pendant-earclips and a ring, composed of polished amber beads and textured gold, necklace length 23½ inches, ring size 6½, necklace signed Flato.

US\$ 10,000-15,000



9



10

10

PROPERTY OF A PALM BEACH LADY

**GOLD AND DIAMOND NECKLACE,
BUCELLATI**

Composed of a series of textured gold palmettes accented with round and single-cut diamonds, gross weight approximately 73 dwts, length 16¾ inches, signed M. Buccellati, Italy.

US\$ 6,000-8,000



11

11

PROPERTY FROM A PROMINENT FAMILY COLLECTION, WASHINGTON, D.C.

EMERALD AND DIAMOND RING

Centering a square emerald-cut emerald weighing approximately 5.65 carats, accented by four marquise-shaped diamonds, size 5½.

Accompanied by AGL report no. 1100184 dated April 15, 2019 stating that the emerald is of Colombian origin, clarity enhancement: minor, type: traditional.

US\$ 8,000-12,000



12

12

PROPERTY FROM A PROMINENT FAMILY COLLECTION, WASHINGTON, D.C.

EMERALD AND DIAMOND CLIP-BROOCH AND PAIR OF EARCLIPS

The fringed clip-brooch centering a square emerald-cut emerald weighing approximately 4.20 carats, within a surround of round, old European and marquise-shaped diamonds and round emeralds, and a pair of similarly-set earclips. Fitted with posts.

Accompanied by AGL report no. 1100185 dated April 16, 2019 stating that the emerald weighing approximately 4.20 carats is of Colombian origin, clarity enhancement: minor, type: traditional.

US\$ 12,000-15,000



13

14

13

PROPERTY FROM A PRIVATE COLLECTION,
NEW YORK

**GOLD 'CHEXA' NECKLACE AND TWO
GOLD 'CHRON' BRACELETS, MARINA B**

The necklace composed of a line of hexagonal gold links, length 15¼ inches, signed Marina B, numbered A271, with Italian assay and maker's marks; the two bracelets composed of similarly designed round links, length 7¼ inches, one signed Marina B, numbered A879, with Italian assay and maker's marks, the other unsigned; total gross weight approximately 114 dwts.

US\$ 7,500-10,000

14

PROPERTY FROM A SAN FRANCISCO PRIVATE
COLLECTION

**PAIR OF CHALCEDONY AND
DIAMOND EARCLIPS, VAN CLEEF &
ARPELS, FRANCE**

Composed of fluted green chalcidony hoops accented with a band of bezel-set round diamonds, one earclip signed VCA, France, numbered 74, each with French export mark. Fitted with posts; with signed box.

US\$ 15,000-20,000



15

PROPERTY OF A PALM BEACH LADY

PAIR OF AZURMALACHITE, RUBY AND DIAMOND EARCLIPS, DAVID WEBB

Composed of fluted azurmalachite topped with oval ruby cabochons measuring approximately 10.6 x 7.8 mm and 10.4 x 8.1 mm, framed with round diamonds, *signed Webb*. Fitted with pendant hooks.

US\$ 6,000-8,000

16

PROPERTY OF A PALM BEACH LADY

GOLD, AZURMALACHITE, RUBY AND DIAMOND NECKLACE, DAVID WEBB

The oval azurmalachite cabochon measuring approximately 46.0 x 33.0 x 7.5 mm, within a frame pavé-set with round diamonds, topped with three graduated ruby cabochons, on a gold curb link chain, gross weight approximately 105 dwts, *length 19 inches with detachable 3 inch segment, signed Webb*. With signed pouch.

US\$ 10,000-15,000



17



18

17

PROPERTY OF A LADY

**GOLD AND ENAMEL BANGLE-
BRACELET, SCHLUMBERGER FOR
TIFFANY & CO., FRANCE**

Applied with blue paillonné enamel, decorated with dot and lozenge motifs, gross weight approximately 84 dwts, internal circumference 6¼ inches, signed Tiffany Schlumberger, Made in France, with French export and workshop marks.

US\$ 12,000-18,000

18

PROPERTY OF A LADY

**PAIR OF GOLD AND DIAMOND
EARCLIPS**

Designed as spirals, set with round diamonds, with workshop mark.

US\$ 6,000-8,000



19

PROPERTY FROM AN AMERICAN COLLECTION
**GOLD, RUBY, DIAMOND AND PEARL
 BROOCH**

Of scroll motif, composed of polished gold segments and two gold snake chains, embellished with old European and single-cut diamonds and round rubies, further accented with seed pearls, gross weight approximately 34 dwts; 1940s.

Please note that the pearls have not been tested for natural origin.

US\$ 6,000-8,000



20

20

PROPERTY FROM A PRIVATE COLLECTION
**GOLD AND DIAMOND BRACELET,
 DE GRISOGONO**

Of hinged design, composed of polished pink gold, a segment pave-set with numerous round diamonds, gross weight approximately 39 dwts, *internal circumference 6 1/8 inches, signed de Grisogono, numbered B87935, with Swiss hallmarks.*

US\$ 6,000-8,000



22



23



21

21

PROPERTY FROM A PRIVATE COLLECTION,
GREENWICH, CONNECTICUT

**PAIR OF GOLD AND DIAMOND
EARCLIPS, VAN CLEEF & ARPELS,
FRANCE**

Of foliate design, set with numerous round diamonds, *signed Van Cleef & Arpels, numbered 79089 and 53698, with French assay and workshop marks.*

US\$ 8,000-12,000

22

PROPERTY OF A LADY

**GOLD, RUBY AND DIAMOND CLIP-
BROOCH, OSCAR HEYMAN &
BROTHERS**

Of floral design, set with cabochon rubies, highlighted with round and single-cut diamonds, the leaves and ribbon composed of polished gold, *with maker's mark, numbered 27922; circa 1940.*

US\$ 8,000-12,000

23

PROPERTY FROM A PRIVATE COLLECTION

RUBY AND DIAMOND RING

Centering an oval-shaped ruby weighing approximately 3.30 carats, flanked by two half-moon-shaped diamonds, *size 6¼.*

Accompanied by AGL report no. 1099404 dated March 25, 2019 stating that the ruby is of Burmese origin, with indications of heating.

US\$ 15,000-20,000



24

24

PROPERTY OF A PALM BEACH LADY
**GOLD, CULTURED PEARL, TURQUOISE
AND DIAMOND NECKLACE, ARTHUR
KING**

Composed of baroque cultured pearls and tumbled turquoises, within textured gold settings designed as roots, accented at the front with round and marquise-shaped diamonds, length 19¼ inches, signed King, pendant detachable. With signed pouch.

US\$ 10,000-15,000



25



26

25

**GOLD AND DIAMOND BANGLE-
BRACELET, VERDURA**

Of crossover design, composed of textured gold, the terminals set with numerous old European-cut diamonds, gross weight approximately 71 dwts, *internal circumference 6½ inches, signed Verdura.*

US\$ 20,000-30,000

26

**PROPERTY FROM AN AMERICAN COLLECTION
TURQUOISE AND DIAMOND BROOCH,
DAVID WEBB**

Of floral design, featuring two pear-shaped turquoise cabochon flower buds with intertwining stems set with round diamonds, *signed Webb.*

US\$ 10,000-15,000



27

PROPERTY FROM A FAMILY, NEW ENGLAND
DIAMOND RING

Set with an old European-cut diamond weighing 6.02 carats, size 6 $\frac{1}{4}$.

Accompanied by GIA report no. 2205221323 dated April 12, 2019 stating that the diamond is J color, SI1 clarity.

US\$ 50,000-70,000

28

PROPERTY OF A PALM BEACH LADY
DIAMOND NECKLACE AND PAIR OF EARCLIPS, GUCCI

The necklace composed of a series of floral motifs set with round diamonds, *length 17 $\frac{1}{2}$ inches, signed Gucci, with French import mark;* together with a pair of matching earclips, *signed Gucci, with later modifications.*

US\$ 15,000-20,000



29



30



31

29

PROPERTY FROM A WEST COAST FAMILY
RUBY AND DIAMOND RING

Centering a cushion-cut ruby weighing 4.74 carats, framed by round and baguette diamonds, size 6¾.

Accompanied by AGL report no. 1099683 dated April 1, 2019 stating that the ruby is of Thai origin, with clarity enhancement: minor, type: heating residues and in-filling.

US\$ 10,000-15,000

30

PROPERTY OF A LADY, SARASOTA, FLORIDA
FANCY INTENSE YELLOW DIAMOND AND DIAMOND RING, VAN CLEEF & ARPELS

Centering a cut-cornered rectangular step-cut Fancy Intense Yellow diamond weighing 4.24 carats, framed and accented by round diamonds, size 6, detachable for wear as pendant, partially signed VCA, numbered NY 49001.

Accompanied by GIA report no. 6204169738 dated March 27, 2019 stating that the diamond is Fancy Intense Yellow, Natural Color, SI1 clarity.

US\$ 50,000-70,000

31

PAIR OF FANCY VIVID YELLOW DIAMOND AND DIAMOND EARRINGS

Of floral design, the petals set with ten Fancy Vivid Yellow pear-shaped diamonds weighing from 0.71 carat to 0.40 carat, the centers set with round near colorless diamonds.

Accompanied by ten GIA reports dated from June 6, 2011 to February 11, 2019 stating that the diamonds weighing from 0.71 carat to 0.40 carat are Fancy Vivid Yellow, Natural Color, VVS1 to SI1 clarity.

US\$ 40,000-60,000



32



33

32

TWO GOLD AND DIAMOND BANGLE-BRACELETS

The yellow and white gold bangles of curved, hinged design, centered to the front on a row of baguette and tapered baguette diamonds, and pavé-set with round diamonds, total gross weight approximately 102 dwts, *internal circumference 6½ inches, numbered 225 and 130.*

US\$ 15,000-20,000

33

DIAMOND AND YELLOW SAPPHIRE ‘MARGUERITE SECRET’ WATCH-BROOCH COMBINATION, VAN CLEEF & ARPELS

Designed as a daisy, the domed center set with round yellow sapphires opening to reveal a circular dial pavé-set with round diamonds, the petals, lugs and clasp similarly-set, on a detachable black grosgrain strap, quartz movement, *length 5¾ to 7 inches, the caseback and strap signed Van Cleef & Arpels, the caseback numbered HH91513 and 1799241, the caseback and clasp with Swiss hallmarks and maker’s marks; wearable on a detachable*

clip-brooch fitting of foliate design with diamond-set bud, signed Van Cleef & Arpels, numbered CAXF027, HH91513, with French and Swiss assay marks and maker’s mark, fitting illustrated at sothebys.com. With signed box and pouch.

Accompanied by Van Cleef & Arpels booklets which include an International Certificate of Authenticity.

US\$ 40,000-60,000



34



36



35

34

**CHALCEDONY, DIAMOND AND
SAPPHIRE 'BALLERINA' CLIP-
BROOCH, VAN CLEEF & ARPELS**

The ballerina with a rose-cut diamond face, decorated with a sapphire and diamond headdress, her costume trimmed with calibré-cut sapphires, accented by round diamonds, the skirt composed of polished blue chalcedony accented by round sapphires and diamonds, signed Van Cleef & Arpels, numbered MU0241, with maker's mark. With signed box and pouch.

US\$ 60,000-80,000

35

PROPERTY FROM A PRIVATE COLLECTION,
GREENWICH, CONNECTICUT

SAPPHIRE AND DIAMOND RING

Set with a cushion-cut sapphire weighing 11.01 carats, flanked by two half-moon-shaped diamonds, size 5½, fitted with inner sizing band.

Accompanied by AGL report no. 1099649 dated April 3, 2019 stating that the sapphire is of Ceylon origin, with no indications of heating.

US\$ 30,000-50,000

36

PROPERTY FROM A PRIVATE COLLECTION,
WASHINGTON, D.C.

DIAMOND RING

Set with an emerald-cut diamond weighing 6.22 carats between tapered baguette diamond shoulders, the gallery set with round diamonds, size 5½.

Accompanied by GIA report no. 1186144498 dated January 27, 2017 stating that the diamond is K color, VS1 clarity.

US\$ 30,000-50,000





37



39

37

PROPERTY FROM A FLORIDA FAMILY

STAR SAPPHIRE AND DIAMOND RING

Centering a cabochon star sapphire weighing approximately 64.15 carats, framed and accented by baguette, tapered baguette, round and trapeze-cut diamonds, size 5¾.

US\$ 15,000-20,000

39

DIAMOND RING

Set with a round diamond weighing 7.59 carats, size 6, with hinged shank.

Accompanied by GIA report number 2205048343 dated February 7, 2019 stating that the diamond is L color, SI1 clarity.

US\$ 35,000-55,000

38 NO LOT



40



41

40

PROPERTY OF A LADY

DIAMOND BRACELET

Of openwork geometric design set with old European, pear, triangular, trapezoid and baguette-cut diamonds, length $7\frac{3}{8}$ inches, one diamond missing; circa 1930.

US\$ 20,000-30,000

41

PROPERTY OF A LADY

**PAIR OF DIAMOND PENDANT
EARCLIPS**

Of floral girandole design, set throughout with round and single-cut diamonds.

US\$ 6,000-8,000



42



43

42

**TOURMALINE AND DIAMOND
BRACELET, TIFFANY & CO.**

Of spray design, set with round greenish blue tourmalines, formed by swirling lines of round, tapered baguette and baguette diamonds, *internal circumference 6¼ inches, signed Tiffany & Co., numbered 34711429.*

US\$ 30,000-50,000

43

**PADPARADSCHA SAPPHIRE AND
DIAMOND RING**

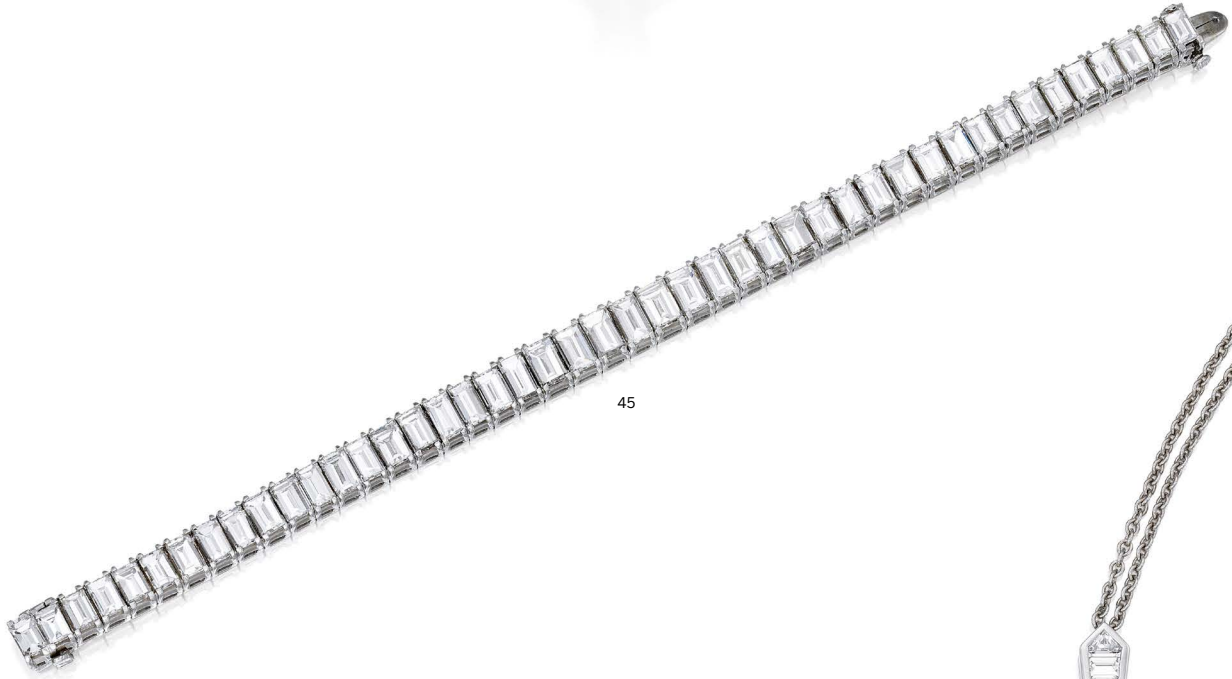
Centering a cushion-cut padparadscha sapphire weighing 14.81 carats, framed by two rows of tapered baguette and round diamonds, *size 7½.*

Accompanied by AGL report no. 1095518 dated October 18, 2018 stating that the sapphire is of Ceylon origin, with indications of low temperature heating.

US\$ 40,000-60,000



44



45



46

44

PROPERTY FROM A FLORIDA PRIVATE COLLECTION

DIAMOND RING

Centering an emerald-cut diamond weighing 4.19 carats, flanked by baguette diamonds, size 8.

Accompanied by GIA report no. 5202160394 dated March 21, 2019 stating that the diamond is J color, VS1 clarity.

US\$ 20,000-30,000

45

PROPERTY FROM A PRIVATE COLLECTION

DIAMOND BRACELET

The slightly graduated line bracelet set with 45 emerald-cut diamonds, length 7 inches.

US\$ 8,000-10,000

46

PROPERTY OF A LADY

DIAMOND PENDANT-NECKLACE, GRAFF

Designed as a cross, set with calibr -cut diamonds, suspended from a fine link chain, length 18 inches, signed Graff, numbered 4038, with Italian registry mark.

US\$ 15,000-20,000



47

**PAIR OF SAPPHIRE AND DIAMOND
EARCLIPS, ALETTO BROTHERS**

Of floral design, set with pear-shaped sapphires and round diamonds, *signed Aletto Bros.* With signed box.

US\$ 15,000-20,000

48

DIAMOND NECKLACE, TIFFANY & CO.

Composed of concentric circle motifs of varying sizes set with round diamonds, accented with baguette diamonds, *length 16³/₄ inches, signed Tiffany & Co., numbered 34288054.*

US\$ 40,000-60,000



49



50



51

49

**SAPPHIRE, EMERALD, DIAMOND,
COLORED DIAMOND AND ENAMEL
BROOCH**

Of jardinière design, set with old European, single-cut, and baguette diamonds accented by carved sapphires and emeralds, the base of the vase highlighted by an old European-cut diamond of yellow hue weighing approximately 1.10 carats, detailed with black enamel; circa 1930.

US\$ 6,000-8,000

50

PROPERTY FROM A DESCENDANT OF MURIEL COLGATE DAMON

SAPPHIRE AND DIAMOND BRACELET

Of buckle design, composed of links set with calibré-cut sapphires, pavé-set with round and single-cut diamonds, and accented with baguette diamonds, length 7 inches.

US\$ 20,000-30,000

51

PROPERTY FROM A DESCENDANT OF CORNELIA HAVEN KING COLGATE

**SAPPHIRE AND DIAMOND JABOT PIN,
CARTIER**

Set with two carved sapphires, accented by old European, single-cut and baguette diamonds, signed Cartier; circa 1925.

US\$ 6,000-8,000



52

53

52

DIAMOND LONGCHAIN

Designed as a line of bezel-set old mine and old European-cut diamonds, *length 34 inches.*

US\$ 15,000-20,000

53

DIAMOND 'LEGACY' RING, TIFFANY & CO.

Set with a cushion modified brilliant-cut diamond weighing 5.07 carats, accented with round diamonds, *size 5¾, signed Tiffany & Co.*

Accompanied by Tiffany & Co. diamond certificate no. 29901155/112100161 stating that the diamond is F color, VVS1 clarity.

US\$ 100,000-150,000



54



56

54

SAPPHIRE AND DIAMOND RING

Set with an oval-shaped sapphire weighing 4.49 carats, the shoulders accented with old European-cut diamonds, size 6½.

Accompanied by AGL report no. CS1075383 dated April 29, 2016 stating that the sapphire is of Burmese origin, with no indications of heating.

US\$ 20,000-30,000

55 NO LOT

56

**NATURAL PEARL AND DIAMOND
PENDANT-NECKLACE**

Composed of a strand of graduated natural pearls measuring approximately 5.8 to 3.0 mm, suspending a detachable tassel of seed pearls surmounted with old European and single-cut diamonds, length 15¾ inches; circa 1920.

Accompanied by AGTA report no. 93028108 dated April 5, 2005 stating that the 86 pearls are natural.

US\$ 12,000-15,000



58



57



59

57

PROPERTY FROM A FAMILY COLLECTION,
PENSACOLA, FLORIDA

EMERALD AND DIAMOND RING

Centering a square emerald-cut emerald weighing approximately 2.50 carats, flanked by two old European-cut diamonds weighing approximately 1.30 carats each, further framed and accented by old European and old mine-cut diamonds, size 6¼; circa 1920.

Accompanied by AGL report no. 1100157 dated April 12, 2019 stating that the emerald is of Colombian origin, clarity enhancement: insignificant, type: traditional.

US\$ 25,000-35,000

58

PROPERTY FROM A PRIVATE COLLECTION,
MIAMI BEACH, FLORIDA

DIAMOND RING

Centering an emerald-cut diamond weighing 5.04 carats, size 5.

Accompanied by GIA report no. 5151535359 dated July 11, 2013 stating that the diamond is H color, VVS2 clarity.

US\$ 65,000-85,000

59

PROPERTY OF A DISTINGUISHED NEW YORK
COLLECTOR

PAIR OF DIAMOND STUDS

Set with round diamonds weighing 2.06 and 2.00 carats.

Accompanied by two GIA reports:

No. 2205160725 dated March 21, 2019 stating that the diamond weighing 2.06 carats is I color, VS1 clarity.

No. 1206160956 dated March 25, 2019 stating that the diamond weighing 2.00 carats is J color, VS2 clarity.

US\$ 10,000-15,000





60

61



62

60

DIAMOND NECKLACE

Designed as a line of round diamonds, centered on an oval-shaped diamond weighing 1.05 carats, length 15½ inches.

Accompanied by GIA report no. 2193630798 dated August 30, 2018 stating that the diamond weighing 1.05 carats is D color, VVS1 clarity.

US\$ 18,000-22,000

61

FANCY INTENSE YELLOW DIAMOND AND DIAMOND RING

Centering an oval-shaped Fancy Intense Yellow diamond weighing 4.01 carats, set between two near colorless half-moon-shaped diamonds, size 6.

Accompanied by GIA report no. 5111252866 dated April 15, 2014 stating that the diamond is Fancy Intense Yellow, Natural Color, VS2 clarity.

US\$ 45,000-65,000

62

PAIR OF FANCY VIVID YELLOW DIAMOND AND DIAMOND EARRINGS

Set with two cut-cornered rectangular modified brilliant-cut Fancy Vivid Yellow diamonds each weighing 3.00 carats, framed and suspended by round diamonds.

Accompanied by two GIA reports:

No. 2195819916 dated November 26, 2018 stating that the diamond is Fancy Vivid Yellow, Natural Color, VVS1 clarity.

No. 6193029190 dated April 26, 2018 stating that the diamond is Fancy Vivid Yellow, Natural Color, VVS1 clarity.

US\$ 115,000-135,000



63



64



65

63

DIAMOND RING

Centering a rectangular modified brilliant-cut diamond weighing 7.04 carats, set between two baguette diamonds, size 8.

Accompanied by GIA report no. 5192630662 dated August 27, 2018 stating that the diamond is F color, VS1 clarity.

US\$ 125,000-175,000

64

UNMOUNTED EMERALD

The square cushion pyramidal cabochon emerald weighing 8.74 carats.

Accompanied by AGL report no. 1099650 dated April 3, 2019 stating that the emerald is of Colombian origin, clarity enhancement: minor, type: traditional.

US\$ 25,000-35,000

65

PROPERTY FROM A PRIVATE COLLECTION

EMERALD AND DIAMOND CLIP-BROOCH

Of foliate design, centering a cabochon emerald measuring approximately 16.7 x 13.6 mm, flanked by six marquise-shaped diamonds, the leaves pavé-set with round diamonds, highlighted with ribbons of baguette and triangle-shaped diamonds.

US\$ 6,000-8,000



66

66

PROPERTY FROM THE COLLECTION OF
DEANA MORRIS GROSS, THENCE BY
DESCENT

DIAMOND EARCLIPS, DAVID WEBB

Of lozenge-shaped bombé design, set with
round diamonds, *signed David Webb*. With
signed pouch.

PROVENANCE

*With summers spent in Boston and winters in
Palm Springs, Deana Morris Gross was known
for her vibrant personality and zest for life. Her
passions included oil painting—in which she was
accomplished—and horse racing. She owned
and raced thoroughbreds with Norma Hess,
wife of gas magnate Leon Hess, with one horse,
Restless Jet, placing fifth in the 1973 Kentucky
Derby alongside Secretariat.*

US\$ 8,000-12,000



Deana Morris Gross



68 (WITH JACKET)



68



67 (WITH JACKET)



67

67

PROPERTY FROM THE COLLECTION OF DEANA MORRIS GROSS, THENCE BY DESCENT

DIAMOND RING AND GOLD JACKET, THE JACKET BY DAVID WEBB

Centered on a marquise-shaped diamond weighing 6.21 carats, set between tapered baguette and square-cut diamonds, size 8¾, with textured gold jacket, size 8, signed Webb. With signed pouch.

Accompanied by GIA report no. 5201186913 dated April 5, 2019 stating that the diamond is H color, VVS2 clarity. Together with the original working diagram stating that the diamond may be Improvable.

US\$ 60,000-80,000

68

PROPERTY FROM THE COLLECTION OF DEANA MORRIS GROSS, THENCE BY DESCENT

DIAMOND BROOCH, DAVID WEBB

Designed as a flower set with round diamonds, with detachable gold ropetwist jacket. brooch signed David Webb. With signed pouch.

US\$ 15,000-20,000



69

69

PROPERTY OF A DISTINGUISHED COLLECTOR
**GOLD AND MICROMOSAIC BRACELET,
 CASTELLANI**

Composed of nine circular medallions depicting various Christian symbols, including four medallions decorated with the Chi-Rho symbol for Christ flanked by Alpha and Omega, two depicting the Agnus Dei or lamb of God, one a dove for the Holy Spirit, one with fish, an anchor and Alpha and Omega, and the central medallion with Greek letters in a cross spelling the word *ichthys* (fish) for Christ, all within gold collets, the edges decorated with filigree, length 8¼ inches, unsigned; circa 1860.

A bulla locket by Castellani decorated with a mosaic similar to the first of the medallions in this bracelet (fish and anchor) is illustrated by Munn, Castellani and Giuliano, Revivalist Jewellers of the 19th Century, pl. 56. The anchor, the ancient symbol of Christian hope, is above the fish for Christ, flanked by Alpha and Omega, 'the beginning and end.'

Castellani made a number of mosaics inspired by early Christian examples found in Rome and Ravenna, under the guidance of Luigi Podio who presided over mosaic workshops from 1851 until his death in 1888. The firm did much to raise the level of the mosaic and their examples are always tightly and neatly executed with the completely smooth surface that characterized their best work. See Munn (ibid) p. 117.

PROVENANCE

Sotheby's New York, December 6, 2006, *Castellani & Giuliano, The Judith H. Siegel Collection*, lot 56.
 Comtesse de Comminges, née Mary Allen van Rensselaer Thayer (1901-1981) thence by direct descent, Sotheby's New York, April 12, 2000, *Magnificent Jewels*, lot 50.

EXHIBITED

Castellani and Italian Archaeological Jewelry, The Bard Graduate Center, New York, November 2004 - February 2005, p. 365, no. 129. Also exhibited at Somerset House, London, May - September 2005 and Villa Giulia, Rome, November 2005 - February 2006.

US\$ 40,000-60,000





70

70

PROPERTY FROM THE ESTATE OF JEAN BOULTON

PAIR RUBY AND DIAMOND PENDANT-EARCLIPS, M. GERARD, FRANCE

Suspending detachable pendants centering pear-shaped cabochon rubies, framed by two rows of round diamonds, the surmounts similarly-set with oval-shaped cabochon rubies, framed by round diamonds, signed *M. Gerard*, numbered 1178, with French assay and workshop marks.

With her broad smile and bright blue eyes, Jean Boulton knew how to make an entrance. Whether it was attending a charity event or hosting one of her legendary dinner parties in

one of her many hometowns—Caracas, Paris, Washington D.C., Charleston, Miami, and New York—she was always the most stylish woman in the room. Her enviable wardrobe, brimming with Valentino, Yves St. Laurent and Chanel, served as the backdrop for her stunning collection of jewelry. Buccellati, David Webb and Van Cleef & Arpels took center stage: the bolder the better, and always elegant. The generosity she showed toward her friends—her flatware and porcelain service accommodated up to 50 guests—extended to local charities, most notably those supporting animal rescue, a legacy that continues today.

US\$ 20,000-30,000



Mrs. Jean Boulton wearing lot 79, pictured with Valentino Garavani



71

71

PROPERTY FROM THE ESTATE OF JEAN BOULTON

RUBY AND DIAMOND PENDANT-NECKLACE, VAN CLEEF & ARPELS, AND PAIR OF EARCLIPS

The necklace suspending a door-knocker style pendant designed as a lion, set throughout with round diamonds and two marquise-shaped ruby eyes, on a band composed of navette-shaped links set with round diamonds,

internal circumference 12½ inches, signed VCA, numbered 45686, one section detachable for wear as a bracelet, length 7¼ inches, the detachable pendant may be worn as a clip-brooch, numbered 338H-2A, pendant loop numbered 338H-2B; circa 1970; together with earclips of similar design, set with two marquise-shaped rubies, accented by round diamonds, unsigned.

US\$ 80,000-120,000



72



73

72

PROPERTY FROM THE ESTATE OF JEAN BOULTON

SAPPHIRE AND DIAMOND BROOCH, SCHLUMBERGER FOR TIFFANY & CO.

Centering a cushion-cut sapphire weighing 27.71 carats, accented by round, old European, old mine, and square-cut diamonds, further accented by sugarloaf and round cabochon sapphires, *signed Tiffany Schlumberger; circa 1965.*

Accompanied by AGL report no. 1100724 dated April 26, 2019 stating that the sapphire is of Ceylon origin, with indications of heating.

US\$ 25,000-35,000

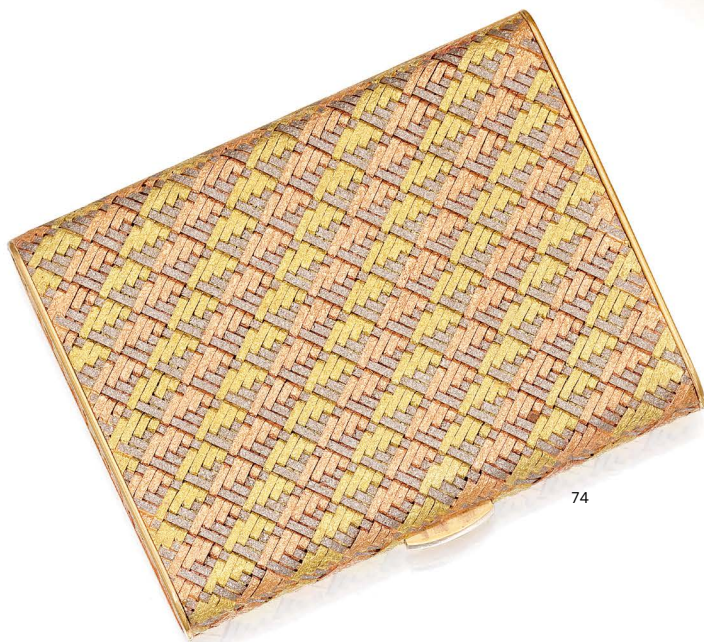
73

PROPERTY FROM THE ESTATE OF JEAN BOULTON

GOLD AND HARDSTONE LIGHTER, BULGARI

The hardstone-set lighter of abstract design, within a fluted gold border, gross weight approximately 36 dwts, *signed Bulgari Made in Italy, with partial Italian registry mark; circa 1970.*

US\$ 2,000-3,000



74

74

PROPERTY FROM THE ESTATE OF JEAN BOULTON

THREE-COLOR GOLD POWDER COMPACT, BULGARI, FRANCE

Composed of basket woven gold measuring approximately 3 x 2¼ x ½ inches, opening to reveal a mirror and powder compartment, gross weight approximately 82 dwts, *signed Bulgari, with French export and workshop mark.*

US\$ 8,000-12,000



75

75

PROPERTY FROM THE ESTATE OF JEAN BOULTON

GOLD AND RUBY EVENING BAG, BULGARI

Composed of basket woven gold measuring approximately 5 x 3 x 1½ inches, accented with a cabochon ruby thumbpiece opening to reveal a mirror and two compartments, gross weight approximately 198 dwts, *signed Bulgari and numbered 837.* With fitted case.

US\$ 6,000-8,000



76

76

PROPERTY FROM THE ESTATE OF JEAN BOULTON

CULTURED PEARL AND DIAMOND NECKLACE

Composed of 23 cultured pearls measuring approximately 19.4 to 16.1 mm, completed by a boule-shaped clasp pavé-set with round diamonds, *length 17¾ inches.*

US\$ 30,000-40,000



77



78

77

PROPERTY FROM THE ESTATE OF JEAN BOULTON

PAIR OF CULTURED PEARL AND DIAMOND EARCLIPS

Featuring two baroque cultured pearls measuring approximately 23.0 x 17.0 x 13.4 mm and 23.1 x 17.5 x 15.3 mm, the surmounts of foliate design set with round and marquise-shaped diamonds, gross weight approximately 36 dwts.

US\$ 6,000-8,000

78

PROPERTY FROM THE ESTATE OF JEAN BOULTON

PAIR OF TURQUOISE AND DIAMOND EARCLIPS, VAN CLEEF & ARPELS

Centering two cabochon turquoises, framed by pear-shaped and round diamonds, *signed Van Cleef & Arpels, numbered N.Y. 42836; circa 1970*. With pendant hooks.

US\$ 15,000-20,000



79

79

PROPERTY FROM THE ESTATE OF JEAN BOULTON

GOLD, CULTURED PEARL AND DIAMOND PENDANT-NECKLACE AND PAIR OF EARCLIPS, BUCCELLATI

Of foliate design, featuring white and gray baroque cultured pearls, set throughout with rose-cut diamonds, total gross weight approximately 108 dwts, *earclip pendants detachable, necklace pendant detachable for wear as a brooch, necklace length 15½ inches, signed Buccellati, Italy, with Italian registry marks; circa 1970. With signed box.*

US\$ 40,000-60,000



80

80

PROPERTY FROM THE ESTATE OF JEAN
BOULTON

**TURQUOISE AND DIAMOND
PENDANT-BROOCH, DAVID WEBB**

Set with turquoise cabochons, accented with
round diamonds in ornate gold and platinum
mountings, *signed Webb, one diamond missing.*

US\$ 15,000-20,000



81

PROPERTY FROM THE ESTATE OF JEAN BOULTON

SUITE OF RUBY, SAPPHIRE, EMERALD AND DIAMOND JEWELS, BUCELLATI

Comprising: a bracelet-necklace combination set with floral carved rubies, round sapphires and emeralds, length 26½ inches, including detachable 7¼ inch segment; suspending a similarly-set detachable pendant-brooch additionally embellished with rose-cut diamonds; a pair of similarly-set earclips suspending detachable pendants; and a matching ring, size 3¾; each signed Buccellati, the pendant-brooch signed Gianmaria Buccellati; circa 1970. With signed and fitted box.

US\$ 50,000-70,000

81





81



82

82

PROPERTY FROM THE ESTATE OF JEAN BOULTON

GOLD AND CITRINE NECKLACE AND PAIR OF EARCLIPS, BUCCELLATI

The necklace composed of square links engraved with starburst patterns, set with citrine cabochons, *length 17 inches*; together with circular earclips engraved with a similar pattern in two-color gold, centered on citrine cabochons; total gross weight approximately 82 dwts, each signed *Mario Buccellati*.

US\$ 7,500-10,000



83

83

PROPERTY FROM THE ESTATE OF JEAN BOULTON

BAROQUE CULTURED PEARL, EMERALD, RUBY, SAPPHIRE AND DIAMOND BROOCH

Designed as a peacock, the torso composed of a cultured baroque pearl, the head and feathers set with round diamonds, accented by round sapphires, rubies and emeralds.

US\$ 5,000-7,000



84

84

PROPERTY FROM THE ESTATE OF JEAN BOULTON

RUBY, EMERALD AND DIAMOND RING, DAVID WEBB

Centered on a cabochon ruby measuring approximately 20.0 x 14.0 x 8.3 mm, accented by round diamonds, further set with round emeralds, size 5½, signed Webb.

US\$ 10,000-15,000



85

85

PROPERTY FROM THE ESTATE OF JEAN BOULTON

**RUBY AND DIAMOND NECKLACE
AND PAIR OF PENDANT-EARCLIPS,
BUCCELLATI**

Comprising: a highly articulated collar necklace set with carved rubies and round diamonds, length 15 inches; and a pair of similarly-set earclips with detachable pendants; each signed Gianmaria Buccellati, with maker's marks and Italian assay and registry marks; circa 1970. With signed and fitted box.

US\$ 50,000-70,000





86

86

PROPERTY FROM THE ESTATE OF JEAN BOULTON

GOLD, CULTURED PEARL, EMERALD, RUBY AND DIAMOND BROOCH, BUCCELLATI

Designed as a butterfly, the body set with two baroque cultured pearls and round diamonds, the wings featuring cabochon emeralds within a surround of open work gold set with round and rose-cut diamonds, with cabochon ruby eyes, signed *Gianmaria Buccellati*, numbered K 1403. With signed box.

US\$ 10,000-15,000



87

87

PROPERTY FROM THE ESTATE OF JEAN BOULTON

GOLD, RUBY AND DIAMOND CUFF-BRACELET, BUCCELLATI

Featuring three oval cabochon rubies within foliate frames, accented by round diamonds, gross weight approximately 83 dwts, *internal circumference 6¼ inches, signed Buccellati, with partial Italian registry mark.*

US\$ 25,000-35,000



88

88

PROPERTY FROM THE ESTATE OF JEAN BOULTON

TWO CULTURED PEARL AND COLORED DIAMOND NECKLACES

One necklace composed of 28 cultured pearls measuring approximately 15.3 to 13.0 mm, the boule-shaped clasp pavé-set with diamonds of brown hue, *length 16 $\frac{3}{8}$ inches*; the other

composed of 32 cultured pearls measuring approximately 15.1 to 12.7 mm, completed by a similarly-set clasp, *length 19 inches*; the two strands may be worn together as a continuous strand.

Please note that the diamonds of brown hue have not been tested for natural origin of color.

US\$ 8,000-12,000



89

90

89

PROPERTY FROM THE ESTATE OF JEAN BOULTON

TWO HARDSTONE AND DIAMOND BRACELETS, L. VETTORI

One bracelet composed of fluted onyx links, highlighted with round diamonds, *length 6⁵/₈ inches*; the other composed of carved rock crystal links, similarly accented by round diamonds, *length 6¹/₂ inches*; each signed *Vettori*.

US\$ 6,000-8,000

90

PROPERTY FROM THE ESTATE OF JEAN BOULTON

RUBY, EMERALD, DIAMOND AND LACQUER PENDANT-BROOCH, CARTIER

Designed as a temple, set with pear-shaped cabochon emeralds, a pear-shaped cabochon ruby, and sugarloaf cabochon rubies, highlighted with baguette and single-cut diamonds, accented with black lacquer, *signed Cartier, numbered 6797; circa 1925 with later modifications.*

US\$ 20,000-30,000





91

91

DIAMOND CUFF-BRACELET, TIFFANY & CO.

The wide openwork cuff featuring scroll and foliate motifs, set throughout with numerous round, marquise and pear-shaped diamonds, gross weight approximately 134 dwts, *internal circumference 6 inches, signed Tiffany & Co., numbered 36891424.*

US\$ 60,000-80,000



92

92

CULTURED PEARL AND DIAMOND RING, DAVID WEBB

Of crossover design, the terminals set with black and white baroque cultured pearls, highlighted with round diamonds, *size 5¼, signed Webb.*

Please note that the cultured pearls have not been tested for natural origin of color.

US\$ 4,000-6,000



93



94

93

PROPERTY OF A DISTINGUISHED NEW YORK COLLECTOR

DIAMOND RING

Featuring a cushion-cut diamond weighing 6.94 carats, size 6¾.

Accompanied by GIA report no. 6204160417 dated March 22, 2019 stating that the diamond is I color, SI1 clarity.

US\$ 35,000-45,000

94

PROPERTY FROM A PRIVATE COLLECTION

DIAMOND AND CULTURED PEARL NECKLACE-BRACELET COMBINATION, VAN CLEEF & ARPELS

Designed as a line of round diamonds, gathered together in three clusters, suspending two drop-shaped cultured pearls measuring approximately 14.5 x 11.9 x 11.8 mm and 13.9 x 11.9 x 11.8 mm, length 26¼ inches, with two

detachable sections measuring 7 inches and 3½ inches for variety of wear, each signed VCA, numbered NY54730.

Accompanied by a Letter of Authenticity from Van Cleef & Arpels.

US\$ 60,000-80,000



95



96



97

95

PROPERTY OF A PRIVATE COLLECTOR
**WHITE GOLD, SAPPHIRE AND
 DIAMOND 'IMPERIAL' WRISTWATCH,
 CHOPARD**

The round dial with three subsidiary dials, sweep seconds hand and date aperture, encircled by round diamonds, the case featuring three push-buttons and two cylinders capped with cabochon sapphires, on an openwork bracelet set with round diamonds, quartz movement, gross weight approximately 99 dwts, *internal circumference 6 1/8 inches, dial and case signed Chopard, case back numbered 390833 1215 and 37/3232-23, with Swiss hallmarks.*

US\$ 15,000-20,000

96

PROPERTY OF A PALM BEACH COLLECTOR
**RUBY AND DIAMOND BRACELET,
 VAN CLEEF & ARPELS**

Composed of rounded links of alternating pavé-set old European, round and single-cut diamonds, and bands of calibré-cut rubies, the clasp with square-cut diamonds, *length 7 1/4 inches, signed Van Cleef & Arpels N.Y., numbered 282 SO; circa 1960.*

US\$ 25,000-35,000

97

PROPERTY OF A DISTINGUISHED NEW YORK COLLECTOR
DIAMOND RING

Set with a round diamond weighing 3.27 carats, flanked by two tapered baguette diamonds, *size 7 1/2.*

Accompanied by GIA report no. 2205160690 dated March 20, 2019 stating that the diamond is G color, VVS2 clarity.

US\$ 25,000-35,000



98



99



100

98

PROPERTY OF A LADY

DIAMOND PENDANT-BROOCH

Of circular design, set with round and old European-cut diamonds, accented with baguette diamonds.

US\$ 5,000-7,000

99

PROPERTY OF A LADY

DIAMOND BRACELET

The highly flexible bracelet set throughout with round diamonds, *length 7½ inches.*

US\$ 7,000-9,000

100

PAIR OF RUBY AND DIAMOND 'BAISER DU DRAGON' CLIPS, CARTIER

Of geometric design, set with round diamonds and pear-shaped ruby eyes, *signed Cartier, numbered 255 38A and 296 74A, with French import mark and workshop mark.*

US\$ 6,500-8,500

101 NO LOT



102



103

102

**PAIR OF RUBY AND DIAMOND
EARCLIPS, ALETTO BROTHERS**

Designed as hoops composed of calibré-cut rubies, bordered by round diamonds, *signed Aletto Bros.* With signed box.

US\$ 20,000-30,000

103

**PROPERTY FROM A PRIVATE COLLECTION
RUBY AND DIAMOND BROOCH**

Of stylized ribbon design, centered on a cushion-cut ruby weighing approximately 3.25 carats, within lines of calibré-cut rubies accented by round and marquise-shaped diamonds.

US\$ 5,000-7,000



105



106



104

104

**DIAMOND, ONYX AND EMERALD
'PANTHÈRE' JABOT PIN, CARTIER,
FRANCE**

Designed as a panther, pavé-set with round diamonds, the body accented by calibré-cut onyx cabochons, the terminal highlighted by a cabochon emerald, *signed Cartier, numbered 43419A, with French assay and workshop marks.*

Accompanied by a Certificate of Authenticity from Cartier.

US\$ 15,000-20,000

105

EMERALD AND DIAMOND RING

Set with a rectangular step-cut emerald weighing approximately 3.45 carats, framed and accented by single-cut diamonds, size 7¼.

US\$ 15,000-20,000

106

**DIAMOND 'FLAMMES' CLIP-BROOCH,
VAN CLEEF & ARPELS**

Set with round and baguette diamonds, *signed Van Cleef & Arpels, numbered BL101879, with Swiss assay mark.* With signed pouch.

US\$ 8,000-12,000



107

PROPERTY OF A PRIVATE COLLECTOR
EMERALD AND DIAMOND RING

Centering an emerald-cut emerald weighing 8.06 carats, accented by baguette diamonds, size 7½; circa 1965.

Accompanied by AGL report no. 1098424 dated March 28, 2019 stating that the emerald is of Colombian origin, clarity enhancement: minor, type: traditional.

US\$ 50,000-70,000

108

PROPERTY FROM AN AMERICAN COLLECTION
DIAMOND BRACELET, MARIANNE OSTIER

Composed of cascading clusters of pear-shaped diamonds, within frames of round, old European and single-cut diamonds, centering one old European and two round diamonds, further accented by baguette diamonds, internal circumference 6¾ inches, with maker's mark for Marianne Ostier, one diamond missing. With signed box.

US\$ 50,000-70,000





109

110

109

DIAMOND 'NOVO' RING, TIFFANY & CO.

Set with a cushion-cut diamond weighing 5.16 carats, the shoulders highlighted with round diamonds, size 6, Tiffany & Co., numbered 22739077.

Accompanied by Tiffany & Co. Diamond Certificate no. 22739077/102200493 stating that the diamond is G color, VVS1 clarity.

US\$ 90,000-120,000

110

**PROPERTY OF A LADY
EMERALD AND DIAMOND NECKLACE**

Composed of a line of tapering round diamonds, suspending five detachable emerald drops framed with round diamonds, the central drop topped with marquise and pear-shaped diamonds, length 15½ inches.

US\$ 15,000-20,000



111

111

**COLORED DIAMOND AND DIAMOND
BRACELET, TIFFANY & CO.**

Composed of alternating round and oval-shaped diamonds and diamonds of yellow hue, all framed by round diamonds, *length 7 inches, signed Tiffany & Co., numbered 28213239.*

Please note that the diamonds of yellow hue have not been tested for natural origin of color.

US\$ 15,000-20,000



112

112

**PROPERTY FROM A PRIVATE COLLECTION
EMERALD AND DIAMOND BANGLE-
BRACELET**

Centering an emerald-cut emerald weighing approximately 8.50 carats, accented by rows of old European, old mine, round, baguette and single-cut diamonds, *internal circumference 6 1/8 inches, with partial French assay and workshop marks.*

Accompanied by AGL report no. 1099403 dated March 25, 2019 stating that the emerald is of Colombian origin, clarity enhancement: insignificant, type: traditional.

US\$ 30,000-50,000



114



113

113

DIAMOND BRACELET

Of openwork geometric design, set throughout with round and old European-cut diamonds, bordered and accented by gold granulation, length 6¾ inches.

US\$ 15,000-20,000

114

EMERALD AND DIAMOND RING

Centering an emerald-cut emerald weighing approximately 4.70 carats, flanked by two old European-cut diamonds, size 7½, with British hallmarks.

US\$ 8,000-12,000



115

115

PROPERTY OF A LADY

**GOLD 'TUBOGAS' WRISTWATCH,
BULGARI**

Of coiled design, the round black dial with baton and Arabic numeral indicators, quartz movement, gross weight approximately 91 dwts, *internal circumference flexible, the dial, caseback and bracelet signed Bulgari, caseback numbered BB191T and P.256158, with Italian registry mark, Swiss hallmark and maker's mark.*

US\$ 5,000-7,000



116

116

PROPERTY OF A LADY

**GOLD, ENAMEL, DIAMOND AND
EMERALD BRACELET, DAVID WEBB**

Designed as a tiger, the body composed of polished gold, applied with black enamel, the eyes set with pear-shaped emeralds, highlighted by round diamonds, *internal circumference 7 inches, signed David Webb.*

US\$ 15,000-20,000



117

118

117

PROPERTY FROM A NEW YORK PRIVATE COLLECTION

YELLOW SAPPHIRE, SAPPHIRE AND DIAMOND RING, HARRY WINSTON

Centering an oval-shaped yellow sapphire weighing 22.00 carats, accented by marquise-shaped diamonds and sapphires, size 5½, with maker's mark for Jacques Timey; ring shank expandable.

Accompanied by AGL report no. 1100620 dated April 24, 2019 stating that the sapphire is of Ceylon origin, with no indications of heating.

US\$ 8,000-12,000

118

PROPERTY FROM A NEW YORK PRIVATE COLLECTION

GOLD, MALACHITE, RUBY, YELLOW SAPPHIRE AND DIAMOND NECKLACE, CHAUMET, PARIS

Composed of a polished malachite collar accented with oval cabochon rubies, yellow sapphires and round diamonds, on a beaded gold necklace, length 15 inches, signed Chaumet, Paris, with French assay and maker's marks.

US\$ 12,000-18,000



119

**TWO ENAMEL AND DIAMOND
BRACELETS, DAVID WEBB**

The serpentine-style links applied with white enamel, accented by links set with clusters of round diamonds, *length 7 $\frac{3}{8}$ inches, signed Webb.*

US\$ 15,000-20,000

120

PROPERTY FROM A NEW YORK PRIVATE
COLLECTION

**PAIR OF YELLOW SAPPHIRE,
SAPPHIRE AND DIAMOND EARCLIPS,
HARRY WINSTON**

Centering oval-shaped sapphires, framed by round diamonds, further highlighted by two cabochon sapphires, *with maker's marks for Harry Winston.*

US\$ 8,000-12,000



Mrs. Caroline Ireland, photo taken by Andy Warhol



121

121

PROPERTY FROM A PRIVATE COLLECTION,
NEW YORK, NEW YORK

**CULTURED PEARL AND DIAMOND
BRACELET, VERDURA**

The torsade composed of nine strands of cultured pearls measuring from approximately 5.1 to 2.8 mm, completed by a gold ropetwist clasp set with round diamonds, length 7¾ inches, signed Verdura, with workshop mark.

“Shoot for the moon. If you miss, you will land among the stars.” This was the advice most frequently given by Caroline P. Ireland and the guiding principle behind her own vivacious, almost voracious, approach to life. While globally minded, she always made the United States her home, starting her adult life in New York where she modelled for Christian Dior, followed by Chicago, New Orleans, California and Florida.

For Caroline, life was an ever-unfolding and evolving adventure. An avid traveler, she would attend funerals in foreign countries, not due to a proclivity for the macabre, but because of the cultural distillation it could provide. On her visits to China in the early 1980s—well before the wave of Western tourism in Communist countries—she would wake early to perform tai chi outdoors with the locals. Upon her marriage to Charles, she enjoyed visiting the Ireland family homes in Paris and St. Tropez, as well as a chateau in the Dordogne. She was an accomplished deep sea fisherwoman and an inspired cook, having studied under Simone Beck, the godmother of French cooking in America.

Her passion extended to the arts, especially for examples by American masters such as Sargent, Bellows, O’Keefe, Cassatt, and Homer, to name a few, as well as Asian works

of art, silver and jewelry. In 1979, Andy Warhol was commissioned to paint four portraits of Caroline and her husband Charles, which he made using a series of Polaroids. Caroline’s philanthropic efforts focused on museums and educational institutions; she sat on the boards of numerous museums and libraries, including the Birmingham Museum of Art, New Orleans Museum of Art and Lynn Haven Library. She and Charles also endowed several funds and scholarships for the University of Alabama, from which Caroline earned an honorary doctorate.

The items offered here, reflecting a classic American style, provide but one perspective on the life of this fascinating woman. We look forward to presenting more jewels from the collection, including works by important European and Russian makers, in the months ahead.

US\$ 4,000-6,000



122

122

PROPERTY FROM THE COLLECTION OF CAROLINE P. IRELAND

RUBY AND SHELL BRACELET, SEAMAN SCHEPPS

Composed of four shells measuring approximately 50.0 x 35.0 mm alternating with rows of cabochon rubies measuring approximately 12.5 x 9.7 mm, length 7 inches, signed Seaman Schepps; circa 1945.

Please note this property cannot be shipped internationally due to endangered species materials.

• US\$ 6,000-8,000



123

123

PROPERTY FROM THE COLLECTION OF CAROLINE P. IRELAND

GOLD, GEM-SET, DIAMOND AND ENAMEL CLIP-BROOCH, VERDURA

Designed as a leopard wearing a crown, composed of textured gold accented by black enamel spots, highlighted with round diamonds and rubies, the eyes set with similarly-cut emeralds, supporting a cultured pearl drop measuring approximately 11.5 x 6.4 mm, signed Verdura; 1957.

In Verdura: The life and work of a master jeweler, Patricia Corbett describes the brooch offered here as "a heraldic creature, lifted from the Lampedusa coat-of-arms." The creature also figures into the novel Il Gattopardo,

written by Verdura's cousin, Giuseppe Tomasi di Lampedusa, and based on the life of di Lampedusa's great-grandfather. The title, though often translated into English as The Leopard, is in fact the name for a smaller member of the cat family, the serval, which were occasionally kept as pets by wealthy Sicilians. The reference to a family coat-of-arms, along with the inclusion of a coronet alluding to Verdura's noble lineage, make this brooch an unusually autobiographical and personal jewel by the designer.

LITERATURE

Verdura: The life and work of a master jeweler by Patricia Corbett, page 183.

US\$ 3,000-4,000



124



126



125

124

PROPERTY FROM THE COLLECTION OF
CAROLINE P. IRELAND

**GOLD AND DIAMOND BRACELET,
SCHLUMBERGER FOR TIFFANY & CO.**

Composed of round gold links, decorated with
foliate motifs pavé-set with round diamonds,
*internal circumference 6¼ inches, signed
Tiffany & Co. Schlumberger; circa 1965.*

US\$ 8,000-12,000

125

PROPERTY FROM THE COLLECTION OF
CAROLINE P. IRELAND

**GOLD AND ROCK CRYSTAL
BRACELET, SEAMAN SCHEPPS**

Composed of alternating gold and rock crystal
curb links, gross weight approximately 72 dwts,
*length 7½ inches, signed Seaman Schepps, with
maker's mark.*

US\$ 5,000-7,000

126

PROPERTY FROM THE COLLECTION OF
CAROLINE P. IRELAND

**GOLD TRAVEL CLOCK,
SCHLUMBERGER FOR TIFFANY & CO.**

Designed as a gold clamshell, opening to reveal
a round dial with baton and Arabic numeral
indicators, manual movement, gross weight
approximately 28 dwts, *dial signed Tiffany
Schlumberger, Switzerland; circa 1965.*

US\$ 1,000-1,500



127

128

127

PROPERTY FROM THE COLLECTION OF
CAROLINE P. IRELAND

**CITRINE, DIAMOND AND RUBY
'BIRD ON A ROCK' BROOCH,
SCHLUMBERGER FOR TIFFANY & CO.**

Designed as a bird set with round diamonds,
perched upon a cushion-cut citrine weighing
approximately 65.00 carats, accented by a
round ruby, *signed Tiffany Schlumberger*. With
signed box.

US\$ 10,000-15,000

128

PROPERTY FROM THE COLLECTION OF
CAROLINE P. IRELAND

**GOLD, PLATINUM AND DIAMOND
NECKLACE, SCHLUMBERGER FOR
TIFFANY & CO.**

Composed of seven X-shaped platinum motifs
pavé-set with round diamonds, on a triple
strand gold chain, gross weight approximately
133 dwts, *length 15¾ inches, signed Tiffany &
Co Schlumberger Std.* With signed box.

US\$ 20,000-30,000



129

129

PROPERTY FROM A PRIVATE COLLECTION,
NEW YORK, NEW YORK

**GOLD, EMERALD AND DIAMOND
'PANTHÈRE' NECKLACE, CARTIER,
FRANCE**

The necklace composed of a series of gold links set with round diamonds, accented at the front with two cushion-cut emeralds weighing a total of 13.39 carats, bordered by square-cut emeralds, *internal circumference 15½ inches, signed Cartier, numbered 229503, with French assay and workshop marks.*

Accompanied by AGL report no. 1099275 dated March 22, 2019 stating that the cushion-cut emeralds are of Colombian origin, clarity enhancement: minor, type: traditional.

US\$ 75,000-100,000



130



130

THREE GEM-SET AND DIAMOND RINGS

One ring set with emerald-cut emeralds and old European-cut diamonds, *size 8, signed T.B. Starr*; another set with round and cushion-cut sapphires and old mine-cut diamonds, *size 8¼*; another set with oval-shaped rubies and diamonds, *size 8, with British hallmarks*.

US\$ 8,000-12,000



131

131

PROPERTY OF A LADY

GOLD, CHALCEDONY AND EMERALD BROOCH, CARTIER, PARIS

Designed as a panther accented with black enamel spots and pear-shaped emerald eyes, perched on a carved chalcidony rock, *signed Cartier Paris, numbered 020117, with French assay and maker's marks*.

US\$ 5,000-7,000



132

132

PROPERTY FROM A PRIVATE COLLECTION

**GOLD AND CORAL NECKLACE,
VERDURA**

Composed of eight strands of coral beads measuring from approximately 12.4 to 3.7 mm, accented with beaded gold rondelles, on a clasp composed of fluted gold crescents, *length 18³/₄ inches, signed Verdura.*

Please note this property cannot be shipped internationally due to endangered species materials.

• US\$ 3,000-5,000



133



144



135

133

PROPERTY FROM AN AMERICAN COLLECTION
**GOLD, TURQUOISE AND DIAMOND
BROOCH, MARIANNE OSTIER**

Of stylized foliate design set with round diamonds and turquoise cabochons, within gold ropetwist frames, with maker's mark for Marianne Ostier; circa 1965. With signed box.

US\$ 4,000-6,000

134

PROPERTY FROM A SAN FRANCISCO PRIVATE COLLECTION
GOLD BRACELET, CARTIER, PARIS

Designed as a flattened curb link chain, gross weight approximately 52 dwts, length 8 inches, signed Cartier, Paris, numbered 06849, with French assay and partial workshop marks. With signed box.

US\$ 7,000-9,000

135

PROPERTY FROM A PRIVATE COLLECTION
DIAMOND BAND RING

Designed as a flexible band of bezel-set round diamonds, size 7, with Italian registry mark.

US\$ 3,000-5,000



136

PROPERTY FROM A PRIVATE COLLECTION
**ENAMEL AND DIAMOND BROOCH,
BOUCHERON, PARIS**

Designed as a rose, the petals applied with red enamel, the stem and leaves set with baguette, round and single-cut diamonds, accented by a pear-shaped diamond, *signed Boucheron Paris, numbered 18605, with French assay mark; circa 1960.*

US\$ 5,000-7,000

137

PROPERTY FROM A PRIVATE COLLECTION,
NEW YORK
**COLORED DIAMOND AND RUBY RING,
VAN CLEEF & ARPELS, FRANCE**

Horizontally-set with a marquise-shaped diamond of light yellow hue weighing approximately 6.30 carats, within a mount embellished with calibré-cut rubies, *size 3¾, signed Van Cleef & Arpels, numbered 115 S., with French assay and partial maker's marks; circa 1945.*

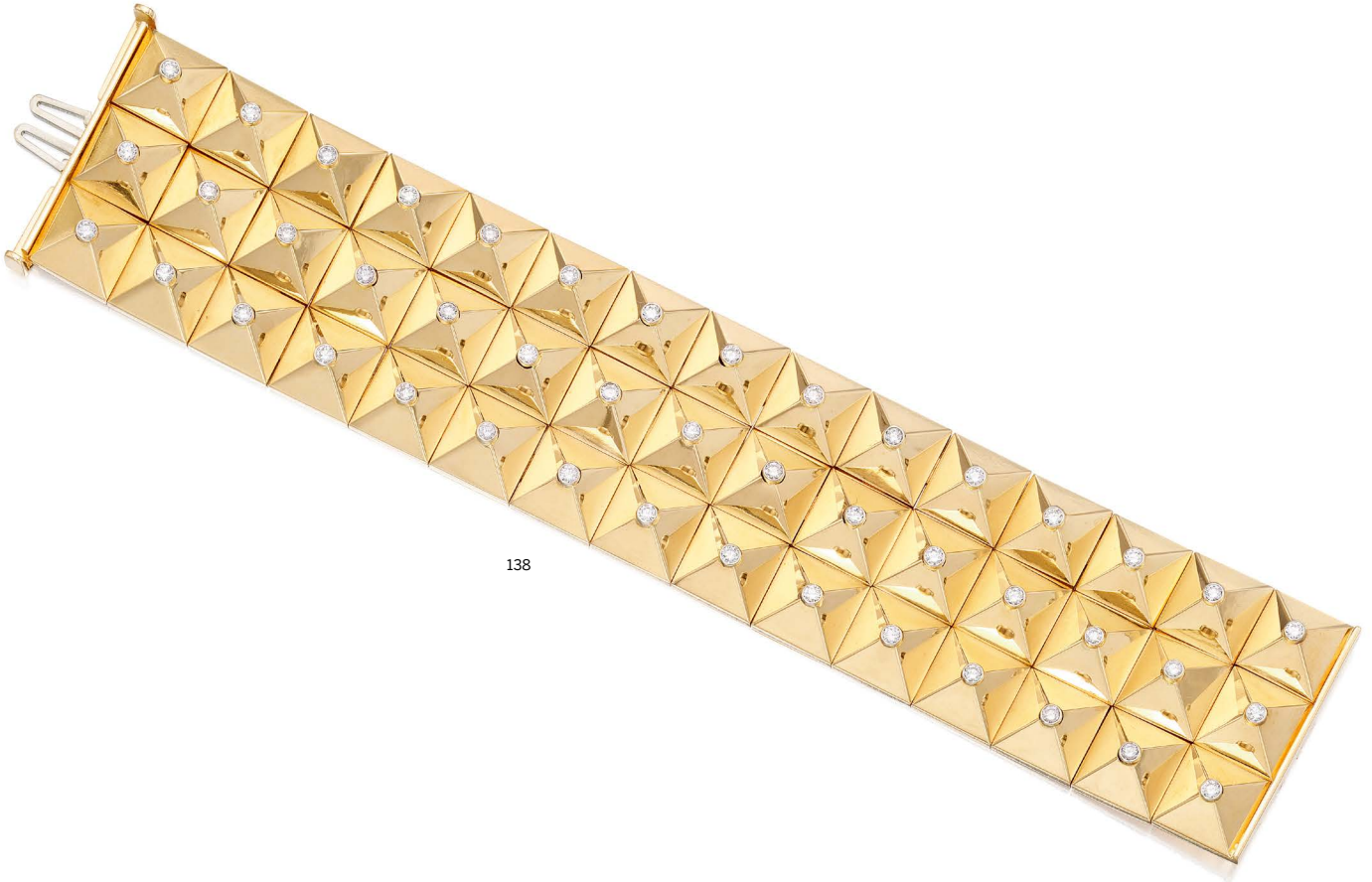
Please note that the diamond of light yellow hue has not been tested for natural origin of color.

US\$ 50,000-70,000





139



138

138

**GOLD AND DIAMOND BRACELET,
ALETTO BROTHERS**

Designed as a wide band of pyramidal links topped with round diamonds, gross weight approximately 100 dwts, length 7 inches, signed *Aletto Bros.* With signed pouch.

US\$ 20,000-30,000

139

PROPERTY OF A PALM BEACH COLLECTOR

**PAIR OF RUBY AND DIAMOND
EARCLIPS, VAN CLEEF & ARPELS**

Each set with an oval cabochon ruby encircled with round diamonds, suspending a line of calibr -cut rubies bordered by round diamonds, signed *Van Cleef & Arpels*, numbered NY54748, with maker's marks. Fitted with posts.

US\$ 5,000-7,000



140

140

PROPERTY OF A PALM BEACH LADY
**PAIR OF ENAMEL AND DIAMOND
EARCLIPS AND RING, DAVID WEBB**

The black enameled earclips topped with two swing-set buckle-shaped motifs composed of round diamonds, together with a ring of similar design, ring size 6½, signed Webb.

US\$ 10,000-15,000



141

141

PROPERTY FROM A PRIVATE COLLECTION,
PLYMOUTH MEETING, PENNSYLVANIA
**COLORED DIAMOND, DIAMOND AND
CITRINE RING**

Set with a pear-shaped diamond of light brownish yellow hue weighing 2.70 carats, encircled with marquis-shaped citrines, accented with round near colorless diamonds, size 3½.

Please note that the diamond of light brownish yellow hue has not been tested for natural origin of color.

US\$ 6,000-8,000



142

143

142

PROPERTY OF A LADY

**GOLD AND DIAMOND BRACELET,
HENRI MARTIN, FRANCE**

Composed of alternating round diamond-set and basketweave curb links, gross weight approximately 42 dwts, length 7¾ inches, signed *Henri Martin France*, with French assay and workshop marks.

US\$ 7,000-9,000

143

PROPERTY OF A LADY

**GOLD, EMERALD AND ENAMEL CLIP-
BROOCH, DAVID WEBB**

Designed as a tiger, the body applied with stripes of black enamel, the eyes accented with pear-shaped emeralds, gross weight approximately 30 dwts, signed *Webb*.

US\$ 5,000-7,000



144

144

PROPERTY OF A PALM BEACH LADY

**PAIR OF DIAMOND PENDANT-
EARCLIPS**

Designed in the form of drops, composed of textured gold and round diamonds, further suspending fringes of round diamonds.

US\$ 5,000-7,000



145

145

PROPERTY OF A LADY

EMERALD AND DIAMOND RING

Featuring an emerald-cut emerald weighing approximately 17.00 carats, accented by round diamonds, size 9.

US\$ 10,000-15,000



146

147

146

PROPERTY OF A LADY

THREE GEM-SET AND DIAMOND RINGS

One ring pavé-set with single-cut diamonds, flanked by segments of pink coral, size 3½, signed VCA, numbered 68 B5001 K 29; another ring similarly-set with single-cut diamonds, the shoulders adorned with onyx, size 3½, signed VCA, numbered 68 B5001 X 27, with French assay mark; and a third ring pavé-set with single-cut diamonds, set with two red coral segments, size 5½, unsigned.

Please note this property cannot be shipped internationally due to endangered species materials.

• US\$ 3,000-5,000

147

PROPERTY OF A PALM BEACH LADY

GOLD, ONYX AND DIAMOND NECKLACE

Designed as a tapered band of alternating polished onyx and polished gold links, the front pavé-set with three sections of round diamonds, accented with lines of square-cut diamonds, internal circumference 16 inches.

US\$ 10,000-15,000



148



149

148

PROPERTY FROM A PRIVATE COLLECTION
**GOLD, CORAL AND DIAMOND
BANGLE-BRACELET, VAN CLEEF &
ARPELS**

Of hinged design, composed of three stacked bands set with segments of coral and pavé-set round diamonds, gross weight approximately 72 dwts, *internal circumference 6¼ inches, signed VCA, partially numbered.*

Please note this property cannot be shipped internationally due to endangered species materials.

• US\$ 15,000-20,000

149

PROPERTY OF A DISTINGUISHED PRIVATE COLLECTOR

**WHITE CORAL AND DIAMOND 'ROSE
DE NOËL' CLIP-BROOCH, VAN CLEEF
& ARPELS, FRANCE**

Designed as a flower composed of white coral petals, the center set with round diamonds, *signed Van Cleef & Arpels, Made in France, numbered 1K534.38, with French assay and maker's marks.*

Please note this property cannot be shipped internationally due to endangered species materials.

• US\$ 12,000-15,000



150



151



152

150

PROPERTY OF A PALM BEACH LADY
**GOLD, ENAMEL AND DIAMOND CUFF-
 BRACELET, DAVID WEBB**

Of geometric design, applied throughout with black enamel, the squared terminals adorned with round diamonds, gross weight approximately 58 dwts, *internal circumference 6¼ inches, signed Webb.* With signed box.

Accompanied by Certificate of Authenticity from David Webb.

US\$ 12,000-15,000

151

**FANCY DEEP BROWNISH ORANGY
 YELLOW DIAMOND, CORAL AND
 ONYX RING**

Centering a round Fancy Deep Brownish Orangy Yellow diamond weighing 2.40 carats, framed and accented by calibr -cut onyx and coral, size 6½.

Accompanied by GIA report no. 2135251024 dated April 18, 2011 stating that the diamond is Fancy Deep Brownish Orangy Yellow, Natural Color, I1 clarity.

US\$ 12,000-15,000

152

PROPERTY OF A LADY
**PAIR OF SAPPHIRE, YELLOW
 SAPPHIRE AND DIAMOND EARCLIPS**

One earclip featuring an oval-shaped blue sapphire weighing approximately 10.30 carats, the other set with a similarly-cut yellow sapphire weighing approximately 11.10 carats, each framed and accented by round and baguette diamonds.

US\$ 18,000-22,000





154



153

153

**GOLD AND LAPIS LAZULI BRACELET,
ALETTO BROTHERS**

Composed of a line of bezel-set faceted triangular lapis lazuli segments, *length 7 inches*, signed *Aletto Bros.* With signed pouch.

US\$ 14,000-16,000

154

**PROPERTY OF A LADY
GOLD AND CAT'S-EYE CHRYSOBERYL
PENDANT-BROOCH, TIFFANY & CO.**

Designed as the head of a cat measuring approximately 3 x 2¾ inches, composed of textured gold with cat's-eye chrysoberyl eyes, gross weight approximately 50 dwts, signed *Tiffany & Co.*; 1960s.

US\$ 8,000-12,000



155



156

155

PROPERTY FROM A SAN FRANCISCO PRIVATE COLLECTION

GOLD, AMETHYST AND ORANGE SAPPHIRE 'HAWAII' RING, VAN CLEEF & ARPELS, FRANCE

The rotating flower head composed of oval-shaped amethyst petals centered on a cluster of round orange sapphires, on a wrap-around band designed as gold leaves, *size 7¼, signed VCA, numbered BL58473-50, with French assay and workshop marks.* With signed box.

US\$ 4,000-6,000

156

PROPERTY FROM A SAN FRANCISCO PRIVATE COLLECTION

GOLD AND DIAMOND 'PANTHÈRE' NECKLACE, CARTIER

Composed of a flattened curb link chain accented at the front with round diamonds, suspending a panther motif pavé-set with round diamonds, gross weight approximately 66 dwts, *length 15 inches, both elements signed Cartier, necklace numbered 30287, pendant numbered 674294.* With signed box.

US\$ 10,000-15,000



157



158

159



157

PROPERTY FROM A PRIVATE COLLECTION
**AQUAMARINE AND DIAMOND RING,
 SCHLUMBERGER FOR TIFFANY & CO.,
 FRANCE**

Centering an emerald-cut aquamarine weighing approximately 10.00 carats, the band of lattice design set with baguette and square-cut diamonds, accented by gold X-shaped motifs, *partially signed Tiffany Schlumberger. Made in France, with French assay mark.*

US\$ 4,000-6,000

158

PROPERTY OF A LADY
**EMERALD AND DIAMOND ‘TWO BEES’
 RING, SCHLUMBERGER FOR TIFFANY
 & CO.**

Centering an emerald-cut emerald measuring approximately 1.85 carats, accented by bee motifs, set with marquise, round and single-cut diamonds, *signed Tiffany & Co. Schlumberger, size 9.*

US\$ 6,000-8,000

159

**GOLD AND EMERALD CUFF-
 BRACELET, DAVID WEBB**

Of hinged design, the hammered gold cuff featuring two monkeys, their eyes set with cabochon emeralds, gross weight approximately 71 dwts, *internal circumference 6 inches, signed Webb.*

US\$ 8,000-10,000



160

160

PROPERTY OF A DISTINGUISHED COLLECTOR

GOLD AND DIAMOND PENDANT-NECKLACE, DAVID WEBB

The textured gold pendant-brooch designed as the Virgo sign of the Zodiac, gross weight approximately 33 dwts, *signed Webb*, with retractable pendant loop; suspended from a hammered gold link chain accented with round diamonds, gross weight approximately 84 dwts, length 23 inches, *signed Webb*.

US\$ 15,000-20,000



161



162

161

PROPERTY FROM A PRIVATE COLLECTION
**GOLD AND DIAMOND BROOCH, VAN
CLEEF & ARPELS, FRANCE**

Of floral design, the petals and leaf set with round and single-cut diamonds, stem detachable, signed Van Cleef & Arpels, numbered 17.103, with French assay, export and workshop marks.

US\$ 15,000-20,000

162

PROPERTY OF A LADY
**GOLD, CULTURED PEARL AND
DIAMOND NECKLACE**

Of graduated design, composed of barrel-shaped links pavé-set with round diamonds, spaced by cultured pearls measuring approximately 13.4 to 10.1 mm, internal circumference 15¼ inches.

US\$ 20,000-30,000



163

163

NATURAL PEARL, TOURMALINE AND DIAMOND RING, TAFFIN

Centering a natural pearl measuring approximately 10.1 mm, the petals composed of carved pink tourmalines, the mounting pavé-set with round diamonds and cabochon orange tourmalines, size 6¼, signed Taffin, numbered TF963, with maker's mark.

Accompanied by GIA report no. 1192287746 dated April 13, 2018 stating that the pearl is natural, saltwater.

US\$ 8,000-12,000



164

164

**PROPERTY OF A LADY
GOLD, BLUE TOPAZ, RUBELLITE AND DIAMOND CUFF-BRACELET**

Of hinged design, centered on a cushion-cut blue topaz weighing approximately 55.00 carats, set between two pear-shaped rubellites, framed by round diamonds, internal circumference 6⅞ inches, Italy.

US\$ 8,000-12,000



165



166

165

TURQUOISE AND DIAMOND 'ROSE DE NOËL' BROOCH, VAN CLEEF & ARPELS

Designed as a flowerhead, the petals composed of carved turquoise, centering a cluster of round diamonds, *signed Van Cleef & Arpels, numbered BL 2499, accompanied by a gold and turquoise ring mounting for alternate wear, size 6¼.*

US\$ 8,000-12,000

166

PROPERTY FROM A PRIVATE COLLECTION

AQUAMARINE AND RUBY RING, VAN CLEEF & ARPELS

Centering an emerald-cut aquamarine weighing approximately 20.00 carats, accented by six round rubies, *size 5¾, fitted with hinged shank, signed V.C. & A., numbered 42681.*

US\$ 6,000-8,000



167

167

PROPERTY OF A PALM BEACH LADY
**SUITE OF GOLD, CULTURED PEARL,
COLORED DIAMOND AND DIAMOND
JEWELS, ARTHUR KING**

Comprising a necklace, a ring and a pair of
pendant-earclips set with cultured baroque

pearls of cream, light gray and golden body
color, accented with round diamonds of near
colorless, yellow and brown hues, within
textured gold mountings designed as roots,
necklace length 17¾ inches, ring size 6½,
signed King. With signed box.

*Please note that the diamonds of yellow and
brown hues have not been tested for natural
origin of color.*

US\$ 8,000-12,000



168

168

FORMERLY FROM THE COLLECTION OF
MRS. PAUL MELLON

**GOLD AND ENAMEL BRACELET, JEAN
SCHLUMBERGER, PARIS**

Applied with alternating sections of orange and dark gray pailloonné enamel, spaced by fluted gold accents, studded with gold dot and lozenge motifs, gross weight approximately 78 dwts, internal circumference 6 inches, signed Schlumberger Paris, with French assay and workshop marks. With signed pouch.

Rachel Lambert Mellon (1910-2014), better known as 'Bunny' Mellon, was a renowned horticulturist, philanthropist and collector. She was the wife of Mr. Paul Mellon, only son of financier Andrew Mellon, who amongst his many accomplishments served as Treasury Secretary to three presidents. Mrs. Mellon's instinct for color, form and design laid the foundation for what was to become one of her greatest passions: the art of gardening. Her most celebrated project was the White House Rose Garden that Jacqueline Kennedy personally asked her to design. Another particularly

enduring and fruitful partnership was formed when Mrs. Mellon was enlisted to landscape the terrace of Jean Schlumberger's New York City apartment. Over the course of their friendship, Schlumberger created nearly two hundred pieces for Mrs. Mellon, often taking inspiration directly from her garden. The majority of the collection can now be found at the Virginia Museum of Fine Arts.

US\$ 8,000-12,000



169

169

FORMERLY FROM THE COLLECTION OF
MRS. PAUL MELLON

**GOLD AND ENAMEL 'CROISILLON'
BRACELET, SCHLUMBERGER FOR
TIFFANY & CO., FRANCE**

Applied with green paillonné enamel, decorated
with fluted gold and X-shaped motifs, gross
weight approximately 51 dwts, *internal
circumference 6³/₈ inches, signed Tiffany
Schlumberger, Made in France, with French
export marks. With signed pouch.*

US\$ 6,000-8,000



170

170

FORMERLY FROM THE COLLECTION OF
MRS. PAUL MELLON

**GOLD, DIAMOND AND ENAMEL
BRACELET, SCHLUMBERGER FOR
TIFFANY & CO., FRANCE**

Applied with red paillonné enamel, accented
with fluted gold and bezel-set round diamonds,
gross weight approximately 55 dwts, *internal
circumference 6¹/₄ inches, signed Tiffany
Schlumberger, Made in France, with French
export and workshop marks. With signed pouch.*

US\$ 10,000-15,000



171

PROPERTY FROM A PRIVATE COLLECTION,
NEW YORK

**PAIR OF GOLD, SAPPHIRE AND
DIAMOND EARCLIPS, CARTIER**

Of foliate motif, the flowerheads set with round sapphires, accented by round diamonds, *signed Cartier, partially numbered; circa 1950*. With signed box.

US\$ 3,000-5,000

172

PROPERTY FROM A PRIVATE COLLECTION,
NEW YORK

**GOLD, SAPPHIRE AND DIAMOND
NECKLACE**

The braided gold chain suspending seven variously-cut sapphires, the central sapphire weighing approximately 8.80 carats, accented by round diamonds, *length 14½ inches; circa 1950*. With signed Cartier box.

Accompanied by Gübelin report no. 19042074 dated April 24, 2019 stating that the sapphire weighing approximately 8.80 carats is of Kashmir origin, with no indications of heating.

US\$ 40,000-60,000



173



174

173

PROPERTY FROM A PRIVATE COLLECTION,
NEW YORK

**GOLD AND DIAMOND 'SNOWFLAKE'
CLIP-BROOCH, VAN CLEEF & ARPELS**

Designed as a snowflake, set with round and single-cut diamonds, *signed Van Cleef & Arpels, numbered N.Y. 20414; circa 1950.* With signed box.

US\$ 15,000-20,000

174

PROPERTY FROM A PRIVATE COLLECTION,
NEW YORK

**PAIR OF GOLD AND DIAMOND
EARCLIPS, VAN CLEEF & ARPELS,
FRANCE**

Designed as snowflakes, set with round diamonds, *signed Van Cleef & Arpels, with French assay marks; circa 1950.* With signed box.

US\$ 8,000-12,000



175

PROPERTY FROM A PRIVATE COLLECTION,
NEW YORK

DIAMOND BRACELET

Designed as a tapered band of old European-cut diamonds accented with geometric millegrain settings, *length 7¼ inches; circa 1925.*

US\$ 10,000-15,000

176

PROPERTY FROM A PRIVATE COLLECTION,
NEW YORK

DIAMOND BRACELET

Of openwork geometric design, set with old European and single-cut diamonds, *length 7¼ inches; circa 1930.*

US\$ 8,000-10,000





177



179



178

177

PROPERTY FROM A PRIVATE COLLECTION,
DALLAS, TEXAS

**WHITE GOLD AND DIAMOND
'AVENUE' WRISTWATCH, HARRY
WINSTON**

The rectangular mother-of-pearl dial with Arabic and baton indicators, featuring a subsidiary subseconds dial, with round diamond pavé-set bezel, reverse-set diamond crown, completed by a white gold bracelet set with round diamonds and a deployant clasp, gross weight approximately 60 dwts, quartz movement, dial and caseback signed Harry Winston, caseback numbered 310LQW 003166 158, with Swiss hallmark and maker's marks for Harry Winston. With signed boxes.

Please note this property cannot be shipped internationally due to endangered species materials.

US\$ 10,000-15,000

178

PROPERTY FROM A PRIVATE COLLECTION,
PLYMOUTH MEETING, PENNSYLVANIA

DIAMOND RING, HARRY WINSTON

Set with a pear-shaped diamond weighing 6.06 carats, between tapered baguette diamonds, size 4¼, with maker's mark for Harry Winston. With signed box.

Accompanied by GIA report no. 5201180442 dated March 29, 2019 stating that the diamond is E color, I1 clarity.

US\$ 25,000-35,000

179

PROPERTY OF A LADY, ATLANTA, GEORGIA
DIAMOND RING

Set with a rectangular modified brilliant-cut diamond weighing 3.38 carats, accented with emerald-cut and tapered baguette diamonds, size 6¼.

Accompanied by GIA report no. 6207177812 dated March 27, 2019 stating that the diamond is I color, VVS1 clarity. Together with the original working diagram stating that the diamond may be potentially Internally Flawless.

US\$ 20,000-30,000



180

180

FANCY INTENSE PURPLISH PINK DIAMOND AND DIAMOND RING

Designed as a flower, centered on a round Fancy Intense Purplish Pink diamond weighing 0.08 carat, the petals set with five pear-shaped diamonds weighing 0.72 to 0.58 carat, accented by round diamonds, size 6¼.

Accompanied by six GIA reports:

No. 2205107092 dated March 13, 2019 stating that the diamond weighing 0.08 carat is Fancy Intense Purplish Pink, Natural Color.

No. 2307562513 dated September 21, 2018 stating that the diamond weighing 0.72 carat is E color, SI1 clarity.

No. 1278545693 dated December 19, 2017 stating that the diamond weighing 0.70 carat is F color, VS2 clarity.

No. 2237575592 dated August 26, 2016 stating that the diamond weighing 0.68 carat is E color, VS2 clarity.

No. 1196846729 dated November 26, 2018 stating that the diamond weighing 0.65 carat is E color, SI1 clarity.

No. 6193347497 dated May 11, 2018 stating that the diamond weighing 0.58 carat is D color, SI2 clarity.

US\$ 15,000-20,000



181

181

**PROPERTY FROM A PRIVATE COLLECTION
STAR RUBY, RUBY AND DIAMOND
BROOCH**

Of floral design, featuring cabochon rubies, six of them star rubies, within a mounting pavé-set with old European, round, single-cut and baguette diamonds.

US\$ 4,000-6,000



182

PROPERTY FROM A PRIVATE COLLECTION

DIAMOND RING

Centering a rectangular step-cut diamond weighing 10.06 carats, flanked by bullet-shaped diamonds, size 5½, numbered X4225.

Accompanied by GIA report no. 6204123924 dated March 7, 2019 stating that the diamond is J color, SI1 clarity.

US\$ 75,000-100,000

183

PROPERTY FROM A PRIVATE COLLECTION

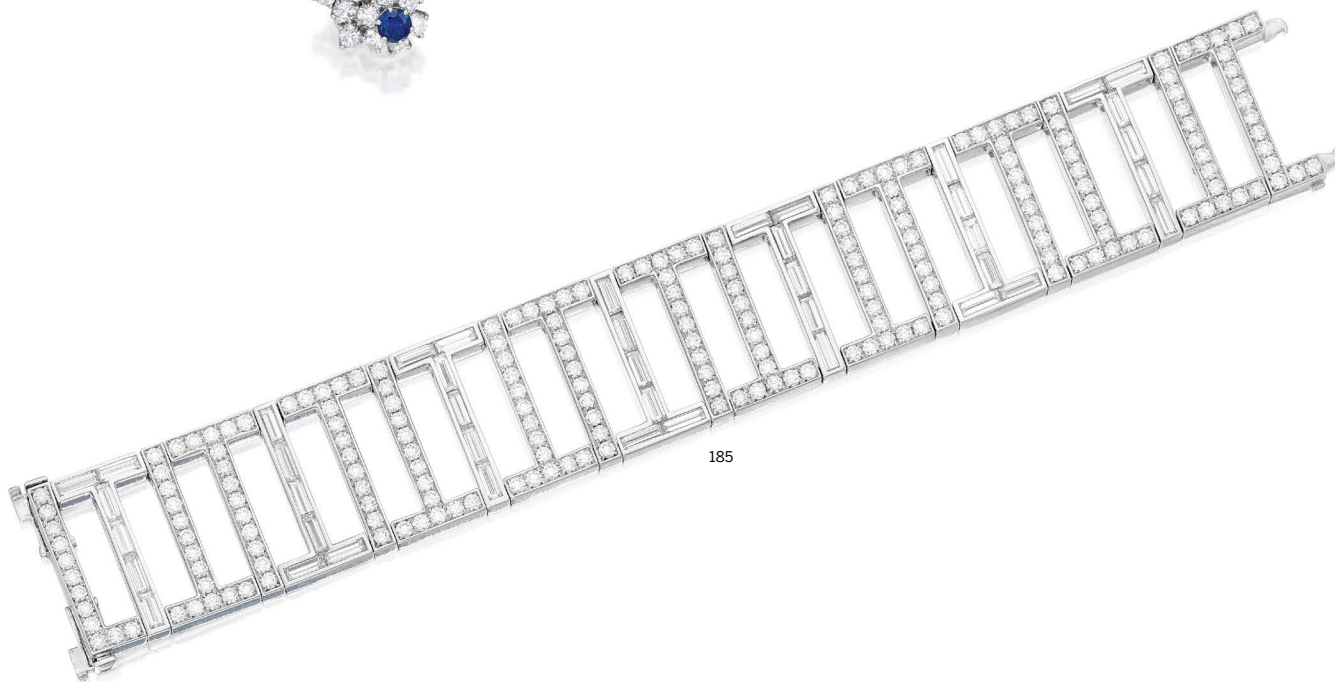
CULTURED PEARL AND DIAMOND NECKLACE

Composed of 29 cultured pearls measuring approximately 15.8 to 13.3 mm, completed by a boule-shaped clasp pavé-set with round diamonds, length 17¾ inches.

US\$ 8,000-12,000



184



185

184

PROPERTY FROM A PRIVATE COLLECTION
**SAPPHIRE AND DIAMOND BROOCH,
CARTIER AND PAIR OF EARCLIPS**

The brooch designed as a flower, set with oval-shaped sapphires forming the petals, highlighted with round and baguette diamonds, *signed Cartier, numbered 618*; together with a pair of earclips of similar design, centered by round and oval-shaped sapphires, accented by round diamonds, *each numbered 2536*.

US\$ 12,000-15,000

185

**DIAMOND 'TIFFANY T' BRACELET,
TIFFANY & CO.**

Composed of stacked 'T' shaped motifs, set with round and baguette diamonds, *length 7 inches, signed Tiffany & Co., numbered 33928394, with British hallmarks*.

US\$ 15,000-20,000



186

**PROPERTY OF A LADY, NEW YORK, NEW YORK
SAPPHIRE AND DIAMOND RING,
GRAFF**

Centering a cushion-cut sapphire weighing 6.97 carats, accented by round diamonds, size 5, signed Graff.

Accompanied by AGL report no. 1100158 dated April 12, 2019 stating that the sapphire is of Burmese origin, with no indications of heating.

Accompanied by Gübelin report no. 0209021 dated September 12, 2002 stating that the sapphire is of Burmese origin, with no indications of heating.

US\$ 70,000-90,000

187

**RUBELLITE AND DIAMOND BROOCH,
TIFFANY & CO.**

Designed as a star, the center decorated with a cluster of spherical rubellites, the rays set with rows of baguette diamonds, signed Tiffany & Co., numbered 36342692.

US\$ 15,000-20,000

188

**PROPERTY FROM AN ATLANTA PRIVATE
COLLECTION**

DIAMOND RING

Set with a pear-shaped diamond weighing 4.21 carats, flanked by two tapered baguette diamonds, size 4¾ with sizing band.

Accompanied by GIA report no. 2205176612 dated March 28, 2019 stating that the diamond is G color, VS2 clarity.

US\$ 40,000-60,000





189

PROPERTY FROM A NEW YORK ESTATE

**TWO GEM-SET AND DIAMOND
BRACELETS**

One bracelet composed of four rows of fluted green chalcedony beads, the decorative clasp set with marquise, round, single-cut and baguette diamonds, *length 7 inches, signed Lido Inc*; the other bracelet composed of four rows of synthetic sapphire beads, the clasp embellished with a star and moon design set with round and single-cut diamonds, *length 7 1/8 inches*.

US\$ 5,000-7,000



190



191

190

PROPERTY FROM A NEW YORK ESTATE
**STAR SAPPHIRE AND DIAMOND RING,
MARCUS & CO.**

Centering a cabochon star sapphire weighing approximately 45.00 carats, flanked by hexagonal and bullet-shaped diamonds, size $3\frac{1}{2}$, partially signed *Marcus & Co.*; circa 1930.

US\$ 12,000-18,000

191

PROPERTY FROM A NEW YORK ESTATE
**STAR SAPPHIRE AND DIAMOND
BRACELET**

Featuring four cabochon star sapphires, framed and accented by pavé-set old European and single-cut diamonds, further highlighted with triangle-shaped, baguette and square-cut diamonds, length $6\frac{7}{8}$ inches; circa 1930.

US\$ 15,000-20,000



192

192

PROPERTY FROM A NEW YORK ESTATE

PAIR OF RUBY AND DIAMOND CLIP-BROOCHES

Of scroll design, each set with cabochon rubies, accented with pavé-set old European-cut diamonds; 1940s.

US\$ 6,000-8,000



193

193

PROPERTY FROM A NEW YORK ESTATE
**STAR SAPPHIRE AND DIAMOND CLIP-
BROOCH, SEAMAN SCHEPPS AND PAIR
OF EARCLIPS**

Of floral design, the clip-brooch petals of lattice design accented by old European and single-cut diamonds, the center set *en tremblant* with cabochon star sapphires and old European-cut diamonds, *signed Seaman Schepps*; together with a pair of earclips of similar design, *unsigned*.

US\$ 5,000-7,000



194



195



196

194

PROPERTY FROM A NEW YORK ESTATE
PEARL AND DIAMOND RING

Set with a pearl measuring approximately 11.3 x 11.8 mm, flanked by old European and single-cut diamonds, in a decorative shank, *size 7½; circa 1925.*

Please note that the pearl has not been tested for natural origin.

US\$ 3,000-5,000

195

PROPERTY FROM A NEW YORK ESTATE
SAPPHIRE AND DIAMOND RING

Set with an oval-shaped sapphire weighing 16.01 carats, flanked by half-moon-shaped diamonds, within a decorative mounting accented with single-cut diamonds, *size 7; circa 1925.*

Accompanied by AGL report no. 1100107 dated April 12, 2019 stating that the sapphire is of Ceylon origin, with no indications of heating.

US\$ 40,000-60,000

196

PROPERTY FROM A NEW YORK ESTATE
EMERALD AND DIAMOND RING

Centering an octagonal step-cut emerald weighing 9.80 carats, accented by trapeze-cut, baguette and single-cut diamonds, *size 7; circa 1930.*

Accompanied by AGL report no. 1100108 dated April 12, 2019 stating that the emerald is of Colombian origin, clarity enhancement: minor, type: traditional.

US\$ 40,000-60,000





198



197

197

PROPERTY FROM A NEW YORK ESTATE
**EMERALD, ONYX AND DIAMOND
 BRACELET, E. M. GATTLE & CO.**

Of decorative openwork design, centered on an emerald-cut emerald weighing approximately 7.00 carats, flanked by two pear-shaped emeralds, and smaller marquise and calibré-cut emeralds, delineated with polished onyx accents, the bracelet pavé-set with old European, single-cut and baguette diamonds, *length 6½ inches, signed Gattle; circa 1930.*

US\$ 40,000-60,000

198

PROPERTY FROM A NEW YORK ESTATE
**EMERALD AND DIAMOND NECKLACE,
 E. M. GATTLE & CO.**

Set with an oval emerald cabochon measuring approximately 19.8 x 16.3 x 10.2 mm, framed with old European and single-cut diamonds, on tapered lines of marquise-shaped, old European and single-cut diamonds, accented by calibré-cut cabochon emeralds, *length 14½ inches, signed Gattle; circa 1925.*

US\$ 25,000-35,000





199

200

199

DIAMOND RING

Set with a cushion-cut diamond weighing 22.41 carats, size 6.

Accompanied by GIA report no. 2185869649 dated November 8, 2017 stating that the diamond is L color, VS2 clarity.

US\$ 375,000-475,000

200

PROPERTY OF A LADY

EMERALD AND DIAMOND PENDANT-NECKLACE

The detachable pendant featuring a square emerald-cut emerald weighing 62.03 carats, accented by round diamonds, suspended from a gold omega chain, length 17 1/2 inches.

Accompanied by AGL report no. 1099796 dated April 4, 2019 stating that the emerald is of Colombian origin, clarity enhancement: minor, type: traditional.

US\$ 100,000-150,000





201

PROPERTY OF AN AMERICAN COLLECTOR
DIAMOND RING

Set with a modified pear brilliant-cut diamond weighing 7.39 carats, within a matte gold mounting, size 5½.

Accompanied by GIA report no. 5151456538 dated May 22, 2013 stating that the diamond is J color, SI2 clarity.

US\$ 40,000-60,000

202

PROPERTY OF AN AMERICAN COLLECTOR
**PAIR OF FANCY LIGHT YELLOW
DIAMOND AND WOOD EARRINGS,
TAFFIN**

The two Fancy Light Yellow old mine-cut diamonds weighing 10.00 and 9.04 carats, backed by polished wood, signed Taffin, numbered TF3635, with maker's marks.

Accompanied by two GIA reports:

No. 14851654 dated February 16, 2006 stating that the diamond weighing 10.00 carats is Fancy Light Yellow, Natural Color, SI1 clarity.

No. 14851440 dated February 6, 2006 stating that the diamond weighing 9.04 carats is Fancy Light Yellow, Natural Color, VS2 clarity.

Please note this property cannot be shipped internationally due to endangered species materials.

• US\$ 100,000-150,000





203

**FANCY LIGHT PURPLISH PINK
DIAMOND AND DIAMOND RING**

Centering a Fancy Light Purplish Pink cut-cornered rectangular mixed-cut diamond weighing 6.51 carats, accented by round near colorless diamonds, size 6½.

Accompanied by GIA report no. 2203096394 dated February 28, 2019 stating that the diamond is Fancy Light Purplish Pink, Natural Color, SI2 clarity.

US\$ 525,000-575,000





204

PROPERTY FROM A PRIVATE COLLECTION

**THREE EMERALD, RUBY AND
DIAMOND NECKLACES**

Each composed of fluted and polished emerald beads and polished ruby beads, interspersed with spacers highlighted by round rubies and diamonds, one necklace with table-cut diamond accents, lengths 33½, 35¼ and 37 inches, the shortest necklace with a dozen small table-cut diamonds missing.

US\$ 45,000-55,000



205



206



205

PROPERTY FROM A PRIVATE COLLECTION
**EMERALD AND DIAMOND RING,
HARRY WINSTON**

Featuring an emerald-cut emerald weighing 39.01 carats, flanked by two triangle-shaped diamonds, size $4\frac{3}{4}$, signed *Harry Winston*, with partial mark for *Jacques Timey*.

Accompanied by AGL report no. CS65285 dated July 6, 2015 stating that the emerald is of Colombian origin, clarity enhancement: minor, type: modern.

US\$ 125,000-175,000

206

PROPERTY FROM A PRIVATE COLLECTION
**CULTURED PEARL AND DIAMOND
NECKLACE**

Composed of 56 cultured pearls measuring from approximately 17.1 to 14.0 mm, completed by a boule-shaped clasp set with round diamonds, length 36 inches.

US\$ 30,000-50,000



207



208

207

PROPERTY FROM AN AMERICAN COLLECTION
DIAMOND RING, MARIANNE OSTIER

Set with a pear-shaped diamond weighing 15.13 carats between tapered baguette diamond shoulders, size 6, with sizing band, with maker's mark. With signed box.

Accompanied by GIA report no. 6204123919 dated March 7, 2019 stating that the diamond is D color, SI2 clarity.

US\$ 175,000-225,000

208

PROPERTY FROM A NEW YORK PRIVATE COLLECTION

DIAMOND RING, HARRY WINSTON

Set with an emerald-cut diamond weighing 15.88 carats, between tapered baguette diamonds, size 6½ with sizing beads, unsigned. With signed box.

Accompanied by GIA report no. 2203202647 dated April 5, 2019 stating that the diamond is E color, SI2 clarity.

Accompanied by photocopy of Harry Winston insurance evaluation dated March 15, 1994, available upon request.

US\$ 200,000-300,000

END OF SALE





A SPECTACULAR
88.22 CARAT OVAL
BRILLIANT DIAMOND

Upcoming Jewellery Auctions 2019

8 – 15 March

Jewels Online

21 – 28 March

Jewels Online

2 April

Magnificent Jewels and Jadeite
Hong Kong

17 April

Fine Jewels, New York

18 April

Magnificent Jewels, New York

30 April

Fine Jewels, Paris

14 May

Magnificent Jewels and Noble Jewels
Geneva

21 – 30 May

Jewels Online

5 June

Fine Jewels, London

13 – 20 June

Jewels Online

24 June – 2 July

Jewels Online

18 – 25 July

Jewels Online

ENQUIRIES

GENEVA +41 22 908 4849

NEW YORK +1 212 606 7392

SOTHEBYS.COM/JEWELS

HONG KONG +852 2822 8112

LONDON +44 (0)20 7293 6409

#SOTHEBYSJEWELS

PARIS +33 (0)1 5305 5237 / 5337

MILAN +39 (0)22 950 0201

D Colour, Flawless Oval-Cut Diamond weighing 88.22 carats, estimate HK\$88,000,000–100,000,000 / US\$11,200,000–12,700,000

Lot sold HK\$107,993,000 / US\$13,766,408



DOWNLOAD SOTHEBY'S APP
FOLLOW US @SOTHEBYSJEWELS

Sotheby's EST. 1744



JEHAN CREMSDORFF

A highly important and magnificent gold, blois-style enamel and diamond-set verge watch, Paris, *circa* 1650
Estimate £700,000–1,000,000

Treasures

AUCTION LONDON 3 JULY

EXHIBITION FREE AND OPEN TO THE PUBLIC 29 JUNE – 3 JULY

34–35 NEW BOND STREET, LONDON W1A 2AA
ENQUIRIES +44 (0)20 7293 5486 HENRY.HOUSE@SOTHEBYS.COM
SOTHEBYS.COM/TREASURES #SOTHEBYSDECARTS



DOWNLOAD SOTHEBY'S APP
FOLLOW US @SOTHEBYS



George Daniels
Space Traveller I
A Unique and Important Yellow
Gold Watch with Daniels Double-
wheel Escapement, Mean-solar
and Sidereal Time, Age and
Phase of Moon and Equation of
Time Indications, 1982
GBP 700,000-1,000,000

Masterworks of Time: George Daniels, Visionary

AUCTION LONDON 2 JULY

VIEWING 28 JUNE - 1 JULY

34-35 NEW BOND STREET, LONDON W1A 2AA
ENQUIRIES +1 212 606 7184 WATCHES@SOTHEBYS.COM
SOTHEBYS.COM/WATCHES



DOWNLOAD SOTHEBY'S APP
FOLLOW US @SOTHEBYS

Guide for Absentee and Telephone Bidders

If you are unable to attend an auction in person, you may give Sotheby's Bid Department instructions to bid on your behalf by completing the form overleaf. This service is confidential and available at no additional charge.

General

This service is free and confidential.

Please record accurately the lot numbers, descriptions and the top hammer price you are willing to pay for each lot.

We will try to purchase the lot(s) of your choice for the lowest price possible and never for more than the maximum bid amount you indicate.

"Buy" or unlimited bids will not be accepted.

Alternative bids can be placed by using the word "OR" between lot numbers. Then if your bid on an early lot is successful, we will not continue to bid on other lots for you. Or, if your early bids are unsuccessful, we will continue to execute bids for alternative lots until a bid is successful.

Bids must be placed in the same order as in the catalogue.

The form should be used for one sale only – please indicate the sale number, title and date on the form.

Please place your bids as early as possible, as in the event of identical bids the earliest received will take precedence. Wherever possible bids should be submitted at least twenty-four hours before the auction.

Where appropriate, your bids will be rounded down to the nearest amount consistent with the auctioneer's bidding increments.

Absentee bids, when placed by telephone, are accepted only at the caller's risk and must be confirmed by letter or fax to the Bid Department on +1 212 606 7016.

Please note that the execution of written bids is offered as an additional service for no extra charge at the bidder's risk and is undertaken subject to Sotheby's other commitments at the time of the auction; Sotheby's therefore cannot accept liability for error or failure to place such bids, whether through negligence or otherwise.

Successful bidders will receive an invoice detailing their purchases and giving instructions for payment and clearance of goods. Unsuccessful bidders will be advised.

Please note Sotheby's reserves the right to refuse to accept payment from a source other than the buyer of record.

All bids are subject to the conditions of sale and terms of guarantee applicable to the sale printed in the sale catalogue. Buyer's premium in the amount stated in paragraph 3 of the Conditions of Sale in the back of the sale catalogue will be added to the hammer price as part of the total purchase price, plus any applicable sales tax.

In the event that you are successful, payment is due immediately after the sale unless otherwise agreed in advance. Payment may be made by bank transfer, credit card (which may be subject to a convenience fee), check or cash (up to US\$10,000). You will be sent full details on how to pay with your invoice. It is against Sotheby's general policy to accept single or multiple related payments in the form of cash or cash equivalents in excess of US\$10,000.

It is Sotheby's policy to request any new clients or purchasers preferring to make a cash payment to provide: proof of identity (by providing some form of government issued identification containing a photograph, such as a passport, identity card or driver's license) and confirmation of permanent address.

We reserve the right to seek identification of the source of funds received.

Data Protection

Sotheby's will use information provided by its clients (or which Sotheby's otherwise obtains from eBay or other sources relating to its clients) for the provision of auction and other art-related services, loan services, client administration, marketing and otherwise to manage and operate its business, or as required by law, in accordance with Sotheby's Privacy Policy. This will include information such as the client's name and contact details, proof of identity, financial information, records of the client's transactions, and preferences. Some gathering of information about Sotheby's clients will take place using technical means to identify their preferences in order to provide a higher quality of service to them. Sotheby's may also disclose the client information to other Sotheby's Companies and/or third parties acting on their behalf to provide services for these purposes.

Sometimes, Sotheby's may also disclose this information to carefully selected third parties for their own marketing purposes. If you do not wish your details to be used for this purpose, please email enquiries@sothebys.com.

If the client provides Sotheby's with information that is defined by European data protection laws as "sensitive", the client agrees that it may be used for the purposes set out above.

In the course of these disclosures, personal data collected in the European Economic Area may be disclosed to countries outside the European Economic Area. Although such countries may not have legislation that protects a client's personal information, Sotheby's shall take great care to keep such information secure and in accordance with European data protection principles. By agreeing to these Conditions of Business, the client is agreeing to such disclosure.

Please be aware that Sotheby's may film auctions or other activities on Sotheby's premises and that such recordings may be transmitted over the Internet via Sotheby's website, the eBay website and other Online Platforms. Telephone bids may be recorded.

Under European data protection laws, a client may object, by request and free of charge, to the processing of their information for certain purposes, including direct marketing, and may access and rectify personal data relating to them and may obtain more information about Sotheby's data protection policies by writing to Sotheby's, 34-35 New Bond Street, London W1A 2AA, or 1334 York Avenue, New York, NY 10021, Attn: Compliance, or emailing enquiries@sothebys.com. Sotheby's use of information collected about eBay users may differ and is governed by the terms of the eBay Privacy Policy and Sotheby's on eBay Live Auction Platform Privacy Policy, which can be found on the Sotheby's on eBay Live Auction Website.

Important

Please note that the execution of written and telephone bids is offered as an additional service for no extra charge, and at the bidder's risk. It is undertaken subject to Sotheby's other commitments at the time of the auction. Sotheby's therefore cannot accept liability for failure to place such bids, whether through negligence or otherwise. All bids will be executed and are accepted subject to the "Conditions of Sale" and "Terms of Guarantee" printed in the catalogue for the sale. Please note that a buyer's premium in the amount stated in paragraph 3 of the "Conditions of Sale" in the back of the sale catalogue will be added to the hammer price as part of the total purchase price, plus any applicable sales tax.

New Clients

Please note that we may contact you to request a bank reference. In addition Sotheby's requires a copy of government issued photo ID in order to generate a new account. If you have opened a new account with Sotheby's since 1 December, 2002, and have not already done so, you will be asked to present appropriate documentation confirming your identity before your lots or sale proceeds can be released to you.

For Written/Fixed Bids

- Bids will be executed for the lowest price as is permitted by other bids or reserves.
- "Buy" or unlimited bids will not be accepted and we do not accept "plus one" bids. Please place bids in the same order as in the catalogue.
- Always indicate a "top limit" — the amount up to which you would bid if you were attending the auction yourself.
- Alternative bids can be placed by using the word "or" between lot numbers.
- Where appropriate your written bids will be rounded down to the nearest amount consistent with the auctioneer's bidding increments.

For Telephone Bids

Please clearly specify the telephone number on which you may be reached at the time of the sale, including the country code. We will call you from the saleroom shortly before your lot is offered.

CONDITIONS OF SALE

The following Conditions of Sale and Terms of Guarantee are Sotheby's, Inc. and the Consignor's entire agreement with the purchaser and any bidders relative to the property listed in this catalogue.

The Conditions of Sale, Terms of Guarantee, the glossary, if any, and all other contents of this catalogue are subject to amendment by us by the posting of notices or by oral announcements made during the sale. The property will be offered by us as agent for the Consignor, unless the catalogue indicates otherwise.

By participating in any sale, you acknowledge that you are bound by these terms and conditions.

1. As Is Goods auctioned are often of some age. The authenticity of the Authorship (as defined below) of property listed in the catalogue is guaranteed as stated in the Terms of Guarantee and except for the Limited Warranty contained therein, all property is sold "AS IS" without any representations or warranties by us or the Consignor as to merchantability, fitness for a particular purpose, the correctness of the catalogue or other description of the physical condition, size, quality, rarity, importance, medium, frame, provenance, exhibitions, literature or historical relevance of any property and no statement anywhere, whether oral or written, whether made in the catalogue, an advertisement, a bill of sale, a salesroom posting or announcement, or elsewhere, shall be deemed such a warranty, representation or assumption of liability. We and the Consignor make no representations and warranties, express or implied, as to whether the purchaser acquires any copyrights, including but not limited to, any reproduction rights in any property. We and the Consignor are not responsible for errors and omissions in the catalogue, glossary, or any supplemental material. Sotheby's will not be responsible or liable for damage to frames and glass coverings, regardless of the cause.

2. Inspection Prospective bidders should inspect the property before bidding to determine its condition, size, and whether or not it has been repaired or restored.

3. Buyer's Premium A buyer's premium will be added to the hammer price and is payable by the purchaser as part of the total purchase price. The buyer's premium is 25% of the hammer price up to and including \$400,000, 20% of any amount in excess of \$400,000 up to and including \$4,000,000, and 13.9% of any amount in excess of \$4,000,000.

4. Withdrawal We reserve the right to withdraw any property before the sale and shall have no liability whatsoever for such withdrawal.

5. Per Lot Unless otherwise announced by the auctioneer, all bids are per lot as numbered in the catalogue.

6. Bidding We reserve the right to reject any bid. The highest bidder acknowledged by the auctioneer will be the purchaser. The auctioneer has absolute and sole discretion in the case of error or dispute with respect to bidding, and whether during or after the sale, to determine the successful bidder, to re-open the bidding, to cancel the sale or to re-offer and re-sell the item in dispute. If any dispute arises after the sale, our sale record is conclusive. In our discretion we will execute order or absentee bids and accept telephone bids and online bids via BIDnow, eBay, Invaluable or other online platforms as a convenience to clients who are not present at auctions; Sotheby's is not responsible for any errors or omissions in connection therewith. Prospective bidders should also consult sothebys.com for the most up to date cataloging of the property in this catalogue.

By participating in the sale, you represent and warrant that any bids placed by you, or on your behalf, are not the product of any collusive or other anti-competitive agreement and are otherwise consistent with federal and state antitrust law.

By participating in the sale, you represent and warrant that:

(a) The bidder and/or purchaser is not subject to trade sanctions, embargoes or any other restriction on trade in the jurisdiction in which it does business as well as under the laws of the European Union, the laws of England and Wales, or the laws and regulations of the United States, and is not owned (nor partly owned) or controlled by such sanctioned person(s) (collectively, "Sanctioned Person(s)");

(b) Where acting as agent (with Sotheby's prior written consent), the principal is not a Sanctioned Person(s) nor owned (or partly owned) or controlled by Sanctioned Person(s); and

(c) The bidder and/or purchaser undertakes that none of the purchase price will be funded by any Sanctioned Person(s), nor will any party be involved in the transaction including financial institutions, freight forwarders or other forwarding agents or any other party be a Sanctioned Person(s) nor owned (or partly owned) or controlled by a Sanctioned Person(s), unless such activity is authorized in writing by the government authority having jurisdiction over the transaction or in applicable law or regulation.

In order to bid on "Premium Lots" you must complete the required Premium Lot pre-registration application. Sotheby's decision whether to accept any pre-registration application shall be final. You must arrange for Sotheby's to receive your pre-registration application at least three working days before the sale. Please bear in mind that we are unable to obtain financial references over weekends or public holidays.

Sotheby's may require such necessary financial references, guarantees, deposits and/or such other security, in its absolute discretion, as security for your bid(s).

7. Online Bids via BIDnow or other Online Platforms: Sotheby's may offer clients the opportunity to bid online via BIDnow, eBay, Invaluable or other Online Platforms for selected sales. By participating in a sale via any of these Online Platforms, you

acknowledge that you are bound by these Conditions of Sale as well as the Additional Terms and Conditions for Live Online Bidding ("Online Terms"). By participating in a sale via any Online Platform, Bidders accept the Online Terms, as well as the relevant Conditions of Sale. Online bidding may not be available for Premium Lots.

8. Bids Below Reserve If the auctioneer determines that any opening bid is below the reserve of the article offered, he may reject the same and withdraw the article from sale, and if, having acknowledged an opening bid, he determines that any advance thereafter is insufficient, he may reject the advance.

9. Purchaser's Responsibility Subject to fulfillment of all of the conditions set forth herein, on the fall of the auctioneer's hammer, the contract between the consignor and the purchaser is concluded, and the winning bidder thereupon will immediately pay the full purchase price or such part as we may require. Title in a purchased lot will not pass until Sotheby's has received the full purchase price in cleared funds. The purchaser's obligation to immediately pay the full purchase price or such part as we may require is absolute and unconditional and is not subject to any defenses, setoffs or counterclaims of any kind whatsoever. Sotheby's is not obligated to release a lot to the purchaser until title to the lot has passed and any earlier release does not affect the passing of title or the purchaser's unconditional obligation to pay the full purchase price. In addition to other remedies available to us by law, we reserve the right to impose from the date of sale a late charge of the annual percentage rate of Prime + 6% of the total purchase price if payment is not made in accordance with the conditions set forth herein. Please note Sotheby's reserves the right to refuse to accept payment from a source other than the buyer of record.

Unless otherwise agreed by Sotheby's, all property must be removed from our premises by the purchaser at his expense not later than 30 calendar days following its sale. Purchasers are reminded that Sotheby's liability for loss of or damage to sold property shall cease upon the earlier of (a) 30 calendar days after the date of the auction and (b) our release of the property to the purchaser or the purchaser's designated agent. Upon the expiration of such 30 calendar day period or upon such earlier release, as applicable: (i) the purchaser bears full liability for any and all loss of or damage to the property; (ii) the purchaser releases Sotheby's, its affiliates, agents and warehouses from any and all liability and claims for loss of or damage to the property; and (iii) the purchaser agrees to indemnify and hold Sotheby's, its affiliates, agents and warehouses harmless from and against any and all liability for loss of or damage to property and any all claims related to loss of or damage to the property as of and from and after the time Sotheby's liability for loss or damage to the property ceases in accordance with this paragraph. If any applicable conditions herein are not complied with by the purchaser, the purchaser will be in default and in addition to any and all other

remedies available to us and the Consignor by law, including, without limitation, the right to hold the purchaser liable for the total purchase price, including all fees, charges and expenses more fully set forth herein, we, at our option, may (x) cancel the sale of that, or any other lot or lots sold to the defaulting purchaser at the same or any other auction, retaining as liquidated damages all payments made by the purchaser, or (y) resell the purchased property, whether at public auction or by private sale, or (z) effect any combination thereof. In any case, the purchaser will be liable for any deficiency, any and all costs, handling charges, late charges, expenses of both sales, our commissions on both sales at our regular rates, legal fees and expenses, collection fees and incidental damages. We may, in our sole discretion, apply any proceeds of sale then due or thereafter becoming due to the purchaser from us or any affiliated company, or any payment made by the purchaser to us or any affiliated company, whether or not intended to reduce the purchaser's obligations with respect to the unpaid lot or lots, to the deficiency and any other amounts due to us or any affiliated companies. In addition, a defaulting purchaser will be deemed to have granted and assigned to us and our affiliated companies, a continuing security interest of first priority in any property or money of or owing to such purchaser in our possession, custody or control or in the possession, custody or control of any of our affiliated companies, in each case whether at the time of the auction, the default or if acquired at any time thereafter, and we may retain and apply such property or money as collateral security for the obligations due to us or to any affiliated company of ours. We shall have all of the rights accorded a secured party under the New York Uniform Commercial Code. You hereby agree that Sotheby's may file financing statements under the New York Uniform Commercial Code without your signature. Payment will not be deemed to have been made in full until we have collected good funds. Any claims relating to any purchase, including any claims under the Conditions of Sale or Terms of Guarantee, must be presented directly to Sotheby's. In the event the purchaser fails to pay any or all of the total purchase price for any lot and Sotheby's nonetheless elects to pay the Consignor any portion of the sale proceeds, the purchaser acknowledges that Sotheby's shall have all of the rights of the Consignor to pursue the purchaser for any amounts paid to the Consignor, whether at law, in equity, or under these Conditions of Sale.

10. Reserve All lots in this catalogue are offered subject to a reserve, which is the confidential minimum hammer price at which a lot will be sold. No reserve will exceed the low presale estimate stated in the catalogue, or as amended by oral or posted notices. We may implement such reserve by opening the bidding on behalf of the Consignor and may bid up to the amount of the reserve, by placing successive or consecutive bids for a lot, or bids in response to other bidders. In instances where we have an interest in the

lot other than our commission, we may bid up to the reserve to protect such interest. In certain instances, the Consignor may pay us less than the standard commission rate where a lot is "bought-in" to protect its reserve.

11. Tax Unless exempted by law, the purchaser will be required to pay the combined New York State and local sales tax, any applicable compensating use tax of another state, and if applicable, any federal luxury or other tax, on the total purchase price. The rate of such combined tax is 8.875% in New York City and ranges from 7% to 8.625% elsewhere in New York.

12. Export and Permits It is the purchaser's sole responsibility to identify and obtain any necessary export, import, firearm, endangered species or other permit for the lot. Any symbols or notices in the sale catalogue reflect Sotheby's reasonable opinion at the time of cataloguing and are for bidders' general guidance only; Sotheby's and the Consignor make no representations or warranties as to whether any lot is or is not subject to export or import restrictions or any embargoes.

13. Governing Law and Jurisdiction These Conditions of Sale and Terms of Guarantee, as well as bidders', the purchaser's and our respective rights and obligations hereunder, shall be governed by and construed and enforced in accordance with the laws of the State of New York. By bidding at an auction, whether present in person or by agent, order bid, telephone, online or other means, all bidders including the purchaser, shall be deemed to have consented to the exclusive jurisdiction of the state courts of, and the federal courts sitting in, the State of New York. All parties agree, however, that Sotheby's shall retain the right to bring proceedings in a court other than the state and federal courts sitting in the State of New York.

14. Packing and Shipping We are not responsible for the acts or omissions in our packing or shipping of purchased lots or of other carriers or packers of purchased lots, whether or not recommended by us. Packing and handling of purchased lots is at the entire risk of the purchaser.

15. Limitation of Liability In no event will the aggregate liability of Sotheby's and the consignor to a purchaser exceed the purchase price actually paid.

16. Data Protection Sotheby's will hold and process your personal information and may share it with its subsidiaries and affiliates for use as described in, and in line with, Sotheby's Privacy Policy published on Sotheby's website at www.sothebys.com or available on request by email to enquiries@sothebys.com

Under European data protection laws, a client may object, by request and free of charge, to the processing of their information for certain purposes, including direct marketing, and may access and rectify personal data relating to them and may obtain more information

about Sotheby's data protection policies by writing to Sotheby's, 34-35 New Bond Street, London W1A 2AA, or 1334 York Avenue, New York, NY 10021, Attn: Compliance, or emailing enquiries@sothebys.com.

Please be aware that Sotheby's may film auctions or other activities on Sotheby's premises and that such recordings may be transmitted over the Internet via Sotheby's website, the eBay website, the Invaluable website and other Online Platforms. Telephone bids may be recorded.

Sotheby's use of information collected about eBay users may differ and is governed by the terms of the eBay Privacy Policy and Sotheby's on eBay Live Auction Platform Privacy Policy, which can be found on the Sotheby's on eBay Live Auction Website. Sotheby's use of information collected about Invaluable users may differ and is governed by the terms of the Invaluable Privacy Policy and Sotheby's on Invaluable Online Platform Privacy Policy, which can be found on the Sotheby's on Invaluable Live Auction Website.

TERMS OF GUARANTEE

As set forth below and in the Conditions of Sale, for all lots Sotheby's guarantees that the authorship, period, culture or origin (collectively, "Authorship") of each lot in this catalogue is as set out in the BOLD or CAPITALIZED type heading in the catalogue description of the lot, as amended by oral or written salesroom notes or announcements. Purchasers should refer to the Glossary of Terms, if any, for an explanation of the terminology used in the Bold or Capitalized type heading and the extent of the Guarantee. Sotheby's makes no warranties whatsoever, whether express or implied, with respect to any material in the catalogue other than that appearing in the Bold or Capitalized heading and subject to the exclusions below.

In the event Sotheby's in its reasonable opinion deems that the conditions of the Guarantee have been satisfied, it shall refund to the original purchaser of record the hammer price and applicable Buyer's Premium paid for the lot by the original purchaser of record.

This Guarantee is provided for a period of five (5) years from the date of the relevant auction, is solely for the benefit of the original purchaser of record at the auction and may not be transferred to any third party. To be able to claim under this Guarantee of Authorship, the original purchaser of record must: (i) notify Sotheby's in writing within three (3) months of receiving any information that causes the original purchaser of record to question the accuracy of the Bold or Capitalized type heading, specifying the lot number, date of the auction at which it was purchased and the reasons for such question; and (ii) return the Lot to Sotheby's at the original selling location in the same condition as at the date of sale to the original purchaser of record and be able to transfer good title to the Lot, free from any third party claims arising after the date of such sale.

Sotheby's has discretion to waive any of the above requirements. Sotheby's may require the original purchaser of record to obtain at the original purchaser of record's cost the reports of two independent and recognized experts in the field, mutually acceptable to Sotheby's and the original purchaser of record. Sotheby's shall not be bound by any reports produced by the original purchaser of record, and reserves the right to seek additional expert advice at its own expense. It is specifically understood and agreed that the rescission of a sale and the refund of the original purchase price paid (the successful hammer price, plus the buyer's premium) is exclusive and in lieu of any other remedy which might otherwise be available as a matter of law, or in equity. Sotheby's and the Consignor shall not be liable for any incidental or consequential damages incurred or claimed, including without limitation, loss of profits or interest.

ADDITIONAL TERMS AND CONDITIONS FOR LIVE ONLINE BIDDING

The following terms and conditions (the "Online Terms") provide important information related to live online bidding via BIDnow, eBay, Invaluable, and any other Online Platform through which bidding is made available ("Online Platforms").

These Conditions are in addition to and subject to the same law and our standard terms and conditions of sale, including the authenticity guarantee and any other terms and are not intended in any way to replace them. By participating in this sale via any Online Platform, you acknowledge that you are bound by the Conditions of Sale applicable in the relevant sale and by these additional Conditions.

1. The procedure for placing bids via Online Platforms is a one-step process; as soon as the "Bid Now" button is clicked, a bid is submitted. By placing a bid via any Online Platform, you accept and agree that bids submitted in this way are final and that you will not under any circumstances be permitted to amend or retract your bid. If a successful bid is sent to Sotheby's from your computer, phone, tablet, or any other device, you irrevocably agree to pay the full purchase price, including buyer's premium and all applicable taxes and other applicable charges.

2. If you have the leading bid, it will be indicated on the screen with the statement "Bid with you" (on BIDNow) or "You're the highest bidder" (on eBay) or "Bid with you" (on Invaluable). If a bid is placed online simultaneously with a bid placed by a bidder in the room or on the telephone (a "floor" bid), the "floor" bid generally will take precedence; the auctioneer will have the final discretion to determine the successful bidder or to reopen bidding. The auctioneer's decision is final.

3. The next bidding increment is shown on the screen for your convenience. The auctioneer has discretion to vary bidding increments for bidders in the auction room

and on the telephones, but bidders using Online Platforms may not be able to place a bid in an amount other than a whole bidding increment. All bidding for this sale will be in the domestic currency of the sale location, and online bidders will not be able to see the currency conversion board that may be displayed in the auction room.

4. The record of sale kept by Sotheby's will be taken as absolute and final in all disputes. In the event of a discrepancy between any online records or messages provided to you and the record of sale kept by Sotheby's, the record of sale will govern.

5. Online bidders are responsible for making themselves aware of all salesroom notices and announcements. All salesroom notices will be read by the auctioneer at the beginning, where appropriate, or during the sale prior to a relevant lot being offered for sale. Sotheby's recommends that online bidders log on at least ten minutes before the scheduled start of the auction to ensure that you have heard all announcements made by the auctioneer at the beginning of the sale.

6. Sotheby's reserves the right to refuse or revoke permission to bid via Online Platforms and to remove bidding privileges during a sale.

7. Purchase information shown in the "Account Activity" section of BIDnow, the "Purchase History" section of the "My eBay" page on eBay and the "Account Activity" section of the "My Invaluable" page on Invaluable is provided for your convenience only. Successful bidders will be notified and invoiced by Sotheby's after the sale. In the event of any discrepancy between any online purchase information and the invoice sent to you by Sotheby's following the respective sale, the invoice prevails. Terms and conditions for payment and collection of property remain the same regardless of how the winning bid was submitted.

8. Sotheby's offers online bidding as a convenience to our clients. Sotheby's will not be responsible for any errors or failures to execute bids placed via Online Platforms, including, without limitation, errors or failures caused by (i) a loss of connection to the internet or to the BIDnow, eBay, Invaluable or other Online Platform software by either Sotheby's or the client; (ii) a breakdown or problem with the BIDnow, eBay, Invaluable or other Online Platform software; or (iii) a breakdown or problem with a client's internet connection, mobile network or computer. Sotheby's is not responsible for any failure to execute an online bid or for any errors or omissions in connection therewith.

9. Live online bidding via all Online Platforms will be recorded.

10. In the event of any conflict between these Online Terms and Sotheby's Conditions of Sale and Terms of Guarantee, Sotheby's Conditions of Sale and Terms of Guarantee will control.

11. In the event of any conflict between these Online Terms and any term in any agreement between the User and eBay, these Online Terms will control for purposes of all Sotheby's auctions.

12. In the event of any conflict between these Online Terms and any term in any agreement between the User and Invaluable, these Online Terms will control for purposes of all Sotheby's auctions.

BUYING AT AUCTION

The following will help in understanding the auction buying process as well as some of the terms and symbols commonly used in an auction catalogue. All bidders should read the Conditions of Sale and Terms of Guarantee in this catalogue, as well as the Glossary or any other notices. By bidding at auction, bidders are bound by the Conditions of Sale and Terms of Guarantee, as amended by any oral announcement or posted notices, which together form the sale contract among Sotheby's, the seller (consignor) of the lot and any bidders, including the successful bidder (purchaser).

1. SYMBOL KEY

Reserves

Unless indicated by a box (☐), all lots in this catalogue are offered subject to a reserve. A reserve is the confidential minimum hammer price at which a lot will be sold. The reserve is generally set at a percentage of the low estimate and will not exceed the low estimate of the lot. If any lots in the catalogue are offered without reserve, such lots will be designated by a box (☐). If every lot in a catalogue is offered without a reserve, the Conditions of Sale will so state and this symbol will not be used for each lot.

Guaranteed Property

The seller of lots with this symbol has been guaranteed a minimum price from one auction or a series of auctions. This guarantee may be provided by Sotheby's or jointly by Sotheby's and a third party. Sotheby's and any third parties providing a guarantee jointly with Sotheby's benefit financially if a guaranteed lot is sold successfully and may incur a loss if the sale is not successful. If the Guaranteed Property symbol for a lot is not included in the printing of the auction catalogue, a pre-sale or pre-lot announcement will be made indicating that there is a guarantee on the lot.

Property in which Sotheby's has an Ownership Interest

Lots with this symbol indicate that Sotheby's owns the lot in whole or in part or has an economic interest in the lot equivalent to an ownership interest.

Irrevocable Bids

Lots with this symbol indicate that a party has provided Sotheby's with an irrevocable bid on the lot that will be executed during the sale at a value that ensures that the lot will sell. The irrevocable bidder, who may bid in excess of the irrevocable bid, may be compensated for providing the irrevocable bid by receiving a contingent fee, a fixed

fee or both. If the irrevocable bidder is the successful bidder, any contingent fee, fixed fee or both (as applicable) for providing the irrevocable bid may be netted against the irrevocable bidder's obligation to pay the full purchase price for the lot and the purchase price reported for the lot shall be net of any such fees. From time to time, Sotheby's may enter into irrevocable bid agreements that cover multiple lots. In such instances, the compensation Sotheby's will pay the irrevocable bidder is allocated to the lots for which the irrevocable bidder is not the successful purchaser. Under such circumstances, the total compensation to the irrevocable bidder will not exceed the total buyer's premium and other amounts paid to Sotheby's in respect of any lots for which the irrevocable bidder is not the successful bidder. If the irrevocable bid is not secured until after the printing of the auction catalogue, Sotheby's will notify bidders that there is an irrevocable bid on the lot by one or more of the following means: a pre-sale or pre-lot announcement, by written notice at the auction or by including an irrevocable bid symbol in the e-catalogue for the sale prior to the auction. From time to time, Sotheby's or any affiliated company may provide the irrevocable bidder with financing related to the irrevocable bid. If the irrevocable bidder is advising anyone with respect to the lot, Sotheby's requires the irrevocable bidder to disclose his or her financial interest in the lot. If an agent is advising you or bidding on your behalf with respect to a lot identified as being subject to an irrevocable bid, you should request that the agent disclose whether or not he or she has a financial interest in the lot.

Interested Parties

Lots with this symbol indicate that parties with a direct or indirect interest in the lot may be bidding on the lot, including (i) the beneficiary of an estate selling the lot, or (ii) the joint owner of a lot. If the interested party is the successful bidder, they will be required to pay the full Buyer's Premium. In certain instances, interested parties may have knowledge of the reserve. In the event the interested party's possible participation in the sale is not known until after the printing of the auction catalogue, a pre-sale or pre-lot announcement will be made indicating that interested parties may be bidding on the lot.

Restricted Materials

Lots with this symbol have been identified at the time of cataloguing as containing organic material which may be subject to restrictions regarding import or export. The information is made available for the convenience of bidders and the absence of the symbol is not a warranty that there are no restrictions regarding import or export of the Lot; bidders should refer to Condition 12 of the Conditions of Sale. Please also refer to the section on Endangered Species in the information on Buying at Auction.

Monumental

Lots with this symbol may, in our opinion, require special handling or shipping services due to size or other physical considerations. Bidders are advised to inspect the lot and to contact Sotheby's prior to the sale to discuss any specific shipping requirements.

Premium Lot

In order to bid on "Premium Lots" (☐ in print catalogue or ✦ in eCatalogue) you must complete the required Premium Lot pre-registration application. You must arrange for Sotheby's to receive your pre-registration application at least three working days before the sale. Please bear in mind that we are unable to obtain financial references over weekends or public holidays. Sotheby's decision whether to accept any pre-registration application shall be final. If your application is accepted, you will be provided with a special paddle number. If all lots in the catalogue are "Premium Lots", a Special Notice will be included to this effect and this symbol will not be used.

2. BEFORE THE AUCTION

The Catalogue A catalogue prepared by Sotheby's is published for every scheduled live auction and is available prior to the sale date. The catalogue will help familiarize you with property being offered at the designated auction. Catalogues may be purchased at Sotheby's or by subscription in any categories. For information, please call +1 212 606 7000 or visit sothebys.com. Prospective bidders should also consult sothebys.com for the most up to date cataloguing of the property in this catalogue.

Estimates Each lot in the catalogue is given a low and high estimate, indicating to a prospective buyer a range in which the lot might sell at auction. When possible, the estimate is based on previous auction records of comparable pieces. The estimates are determined several months before a sale and are therefore subject to change upon further research of the property, or to reflect market conditions or currency fluctuations. Estimates should not be relied upon as a representation or prediction of actual selling prices.

Provenance In certain circumstances, Sotheby's may print in the catalogue the history of ownership of a work of art if such information contributes to scholarship or is otherwise well known and assists in distinguishing the work of art. However, the identity of the seller or previous owners may not be disclosed for a variety of reasons. For example, such information may be excluded to accommodate a seller's request for confidentiality or because the identity of prior owners is unknown given the age of the work of art.

Specialist Advice Prospective bidders may be interested in specific information not included in the catalogue description of a lot. For additional information, please contact either a Sotheby's specialist in charge of the sale (all of whom are listed in the front of the catalogue), or Sotheby's Client Services Department. You may also request a condition report from the specialist in charge.

The Exhibition An exhibition of the auction property will be held the week prior to the auction on the days listed in the front of the catalogue. There you will have the opportunity to view, inspect and evaluate the property yourself, or with the help of a Sotheby's specialist.

Salesroom Notices Salesroom notices amend the catalogue description of a lot after our catalogue has gone to press. They are posted in the viewing galleries and salesroom or are announced by the auctioneer. Please take note of them.

Registration Sotheby's may require such necessary financial references, guarantees, deposits and/or such other security, in its absolute discretion, as security for your bid. If you are not successful on any lot, Sotheby's will arrange for a refund (subject to any right of set off) of the deposit amount paid by you without interest within 14 working days of the date of the sale. Any exchange losses or fees associated with the refund shall be borne by you. Registration to bid on Premium Lots must be done at least 3 business days prior to the sale.

3. DURING THE AUCTION

The Auction Auctions are open to the public without any admission fee or obligation to bid. The auctioneer introduces the objects for sale — known as "lots" — in numerical order as listed in the catalogue or by an announcement at the auction. Sotheby's acts as agent on behalf of the seller and does not permit the seller to bid on his or her own property. It is important for all bidders to know that the auctioneer may open the bidding on any lot by placing a bid on behalf of the seller. The auctioneer may further bid on behalf of the seller, up to the amount of the reserve, by placing responsive or consecutive bids for a lot. The auctioneer will not place consecutive bids on behalf of the seller above the reserve.

Bidding in Person If you would like to bid, you must register for a paddle upon entering the salesroom. The paddle is numbered so as to identify you to the auctioneer. To register, you will need a form of identification such as a driver's license, a passport or some other type of government issued identification. If you are a first-time bidder, you will also be asked for your address, phone number and signature in order to create your account. If you are bidding for someone else, you will need to provide a letter from that person authorizing you to bid on that person's behalf. Issuance of a bid paddle is in Sotheby's sole discretion.

Once the first bid has been placed, the auctioneer asks for higher bids, in increments determined by the auctioneer. To place your bid, simply raise your paddle until the auctioneer acknowledges you. You will know when your bid has been acknowledged; the auctioneer will not mistake a random gesture for a bid.

If you wish to register to bid on a Premium Lot, please see the paragraph above.

All lots sold will be invoiced to the name and address in which the paddle has been registered and cannot be transferred to other names and addresses. Sotheby's reserves the right to refuse to accept payment from a source other than the buyer of record.

Absentee Bidding If it is not possible for you to attend the auction in person, you may place your bid ahead of time. In the back of every catalogue there is an absentee bid form, which you can use to indicate the item you wish to bid on and the maximum bid you are willing to make. Return the completed absentee bid form to Sotheby's either by mail or fax. When the lot that you are interested in comes up for sale, a Sotheby's representative will execute the bid on your behalf, making every effort to purchase the item for as little as possible and never exceeding your limit. This service is free and confidential. For detailed instructions and information, please see the Absentee Bid Form and Guide for Absentee Bidders instructions at the back of this catalogue.

Telephone Bidding In some circumstances, we offer the ability to place bids by telephone live to a Sotheby's representative on the auction floor. Please contact the Bid Department prior to the sale to make arrangements or to answer any questions you may have. Telephone bids are accepted only at Sotheby's discretion and at the caller's risk. Calls may also be recorded at Sotheby's discretion. By bidding on the telephone, prospective buyers consent thereto.

Online Bidding If you cannot attend the auction, it may be possible to bid online via BIDnow, eBay, Invaluable or other Online Platforms for selected sales. This service is free and confidential. For information about registering to bid via BIDnow, please see www.sothebys.com. For information about registering to bid on eBay, please see www.ebay.com/sothebys. For information about registering to bid on Invaluable, please see www.invaluable.com/invaluable/help.cfm. Bidders utilizing any online platform are subject to the Online Terms as well as the relevant Conditions of Sale. Online bidding may not be available for Premium Lots.

Employee Bidding Sotheby's employees may bid in a Sotheby's auction only if the employee does not know the reserve and if the employee fully complies with Sotheby's internal rules governing employee bidding.

US Economic Sanctions The United States maintains economic and trade sanctions against targeted foreign countries, groups and organizations. There may be restrictions on the import into the United States of certain items originating in sanctioned countries, including Cuba, Iran, North Korea and Sudan. The purchaser's inability to import any item into the US or any other country as a result of these or other restrictions shall not justify cancellation or rescission of the sale or any delay in payment. Please check with the specialist department if you are uncertain as to whether a lot is subject to these import restrictions, or any other restrictions on importation or exportation.

Hammer Price and the Buyer's Premium For lots which are sold, the last price for a lot as announced by the auctioneer is the hammer price. A buyer's premium will be added to the hammer price and is payable by the purchaser as

part of the total purchase price. The buyer's premium will be the amount stated in the Conditions of Sale.

Currency Board As a courtesy to bidders, a currency board is operated in many salesrooms. It displays the lot number and current bid in both U.S. dollars and foreign currencies. Exchange rates are approximations based on recent exchange rate information and should not be relied upon as a precise invoice amount. Sotheby's assumes no responsibility for any error or omission in foreign or United States currency amounts shown.

Results Successful absentee bidders will be notified after the sale. Absentee bidders will receive a list of sale results if they enclose a stamped self-addressed envelope with their absentee bid form. Printed lists of auction prices are available at our galleries approximately three weeks following each auction and are sent on request to catalogue purchasers and subscribers. Results may also be obtained online at sothebys.com.

International Auctions If you need assistance placing bids, obtaining condition reports or receiving auction results for a Sotheby's sale outside the United States, please contact our International Client Services Department.

4. AFTER THE AUCTION

Payment If your bid is successful, you can go directly to Post Sale Services to make payment arrangements. Otherwise, your invoice will be mailed to you. The final price is determined by adding the buyer's premium to the hammer price on a per-lot basis. Sales tax, where applicable, will be charged on the entire amount. Payment is due in full immediately after the sale. However, under certain circumstances, Sotheby's may, in its sole discretion, offer bidders an extended payment plan. Such a payment plan may provide an economic benefit to the bidder. Credit terms should be requested at least one business day before the sale. However, there is no assurance that an extended payment plan will be offered. Please contact Post Sale Services or the specialist in charge of the sale for information on credit arrangements for a particular lot. Please note that Sotheby's will not accept payments for purchased lots from any party other than the purchaser, unless otherwise agreed between the purchaser and Sotheby's prior to the sale.

Payment by Cash It is against Sotheby's general policy to accept payments in the form of cash or cash equivalents.

Payment by Credit Cards Sotheby's accepts payment by credit card for Visa, MasterCard, and American Express only. Credit card payments may not exceed \$50,000 per sale. Payment by credit card may be made (a) online at <https://www.sothebys.com/en/invoice-payment.html>, (b) by calling in to Post Sale Services at +1 212 606 7444, or (c) in person at Sotheby's premises at the address noted in the catalogue.

Payment by Check Sotheby's accepts (a) personal checks and (b) certified, banker's draft and cashier's checks drawn in US Dollars with a face amount of over \$10,000 (made payable to Sotheby's). While personal and company checks are accepted, property will not be released until such checks have cleared, unless you have a pre-arranged check acceptance agreement. Application for check clearance can be made through the Post Sale Services.

Please note that certified checks, banker's drafts and cashier's checks are accepted at Sotheby's discretion and provided they are issued by a reputable financial institution governed by anti-money laundering laws. Instruments not meeting these requirements will be treated as "cash equivalents" and subject to the constraints noted in the prior paragraph titled "Payment By Cash".

Payment by Wire Transfer To pay for a purchase by wire transfer, please refer to the payment instructions on the invoice provided by Sotheby's or contact Post Sale Services to request instructions.

Sales and Use Tax New York sales tax is charged on the hammer price, buyer's premium and any other applicable charges on any property picked up or delivered in New York State, regardless of the state or country in which the purchaser resides or does business. Purchasers who wish to use their own shipper who is not a considered a "common carrier" by the New York Department of Taxation and Finance will be charged New York sales tax on the entire charge regardless of the destination of the property. Please refer to "Information on Sales and Use Tax Related to Purchases at Auction" in the back of the catalogue.

Collection and Delivery

Post Sale Services
+ 1 212 606 7444
FAX: + 1 212 606 7043
uspostalsaleservices@sothebys.com

Once your payment has been received and cleared, property may be released. Unless otherwise agreed by Sotheby's, all purchases must be removed by the 30th calendar day following a sale.

Shipping Services Sotheby's offers a comprehensive shipping service to meet all of your requirements. If you received a shipping quotation or have any questions about the services we offer please contact us.

Collecting your Property As a courtesy to purchasers who come to Sotheby's to collect property, Sotheby's will assist in the packing of lots, although Sotheby's may, in the case of fragile articles, choose not to pack or otherwise handle a purchase.

If you are using your own shipper to collect property from Sotheby's, please provide a letter of authorization and kindly instruct your shipper that they must provide a Bill of Lading prior to collection. Both documents must be sent to Post Sale Services prior to collection.

The Bill of Lading must include: the purchaser's full name, the full delivery address including the street name and number, city and state or city and country, the sale and lot number.

Sotheby's will contact your shipper within 24 hours of receipt of the Bill of Lading to confirm the date and time that your property can be collected. Property will not be released without this confirmation and your shipper must bring the same Bill of Lading that was faxed to Sotheby's when collecting. All property releases are subject to the receipt of cleared funds.

Please see the Conditions of Sale for further details.

Endangered Species Certain property sold at auction, for example, items made of or incorporating plant or animal materials such as coral, crocodile, ivory, whalebone, tortoiseshell, rhinoceros horn, rosewood, etc., irrespective of age or value, may require a license or certificate prior to exportation and additional licenses or certificates upon importation to another country. Sotheby's suggests that buyers check on their government wildlife import requirements prior to placing a bid. Please note that the ability to obtain an export license or certificate does not ensure the ability to obtain an import license or certificate in another country, and vice versa. It is the purchaser's responsibility to obtain any export or import licenses and/or certificates as well as any other required documentation. In the case of denial of any export or import license or of delay in the obtaining of such licenses, the purchaser is still responsible for making on-time payment of the total purchase price for the lot.

Although licenses can be obtained to export some types of endangered species, other types may not be exported at all, and other types may not be resold in the United States. Upon request, Sotheby's is willing to assist the purchaser in attempting to obtain the appropriate licenses and/or certificates. However, there is no assurance that an export license or certificate can be obtained. Please check with the specialist department or the Shipping Department if you are uncertain as to whether a lot is subject to these export/import license and certificate requirements, or any other restrictions on exportation.

The Art Loss Register As part of Sotheby's efforts to support only the legitimate art market and to combat the illegitimate market in stolen property, Sotheby's has retained the Art Loss Register to check all uniquely identifiable items offered for sale in this catalogue that are estimated at more than the equivalent of US\$1,500 against the Art Loss Register's computerized database of objects reported as stolen or lost. The Art Loss Register is pleased to provide purchasers with a certificate confirming that a search has been made. All inquiries regarding search certificates should be directed to The Art Loss Register, First Floor, 63-66 Hatten Garden, London EC1N 8LE or by email at artloss@artloss.com. The Art Loss Register does not guarantee the provenance or title of any catalogued item against which they search, and will not be liable for any

direct or consequential losses of any nature howsoever arising. This statement and the ALR's service do not affect your rights and obligations under the Conditions of Sale applicable to the sale.

SELLING AT AUCTION

If you have property you wish to sell, Sotheby's team of specialists and client services representatives will assist you through the entire process. Simply contact the appropriate specialist (specialist departments are listed in the back of this catalogue), General Inquiries Department or a Sotheby's regional office representative for suggestions on how best to arrange for evaluation of your property.

Property Evaluation There are three general ways evaluation of property can be conducted:

(1) In our galleries

You may bring your property directly to our galleries where our specialists will give you auction estimates and advice. There is no charge for this service, but we request that you telephone ahead for an appointment. Inspection hours are 9:30 am to 5 pm, Monday through Friday.

(2) By photograph

If your property is not portable, or if you are not able to visit our galleries, you may bring in or send a clear photograph of each item. If you have a large collection, a representative selection of photographs will do. Please be sure to include the dimensions, artist's signature or maker's mark, medium, physical condition and any other relevant information. Our specialists will provide a free preliminary auction estimate subject to a final estimate upon first-hand inspection.

(3) In your home

Evaluations of property can also be made in your home. The fees for such visits are based on the scope and diversity of property, with travel expenses additional. These fees may be rebated if you consign your property for sale at Sotheby's. If there is considerable property in question, we can arrange for an informal "walkthrough."

Once your property has been evaluated, Sotheby's representatives can then help you determine how to proceed should you wish to continue with the auction process. They will provide information regarding sellers' commission rates and other charges, auction venue, shipping and any further services you may require.

SOTHEBY'S SERVICES

Sotheby's also offers a range of other services to our clients beyond buying and selling at auction. These services are summarized below. Further information on any of the services described below can be found at sothebys.com.

Valuations and Appraisals Sotheby's Valuations and Appraisals Services offers advice regarding personal property assets to trusts, estates, and private clients in order to help fiduciaries, executors,

advisors, and collectors meet their goals. We provide efficient and confidential advice and assistance for all appraisal and auction services. Sotheby's can prepare appraisals to suit a variety of needs, including estate tax and planning, insurance, charitable contribution and collateral loan. Our appraisals are widely accepted by the Internal Revenue Service, tax and estate planning professionals, and insurance firms. In the event that a sale is considered, we are pleased to provide auction estimates, sales proposals and marketing plans. When sales are underway, the group works closely with the appropriate specialist departments to ensure that clients' needs are met promptly and efficiently.

Financial Services Sotheby's offers a wide range of financial services including advances on consignments, as well as loans secured by art collections not intended for sale.

Museum Services Tailored to meet the unique needs of museums and nonprofits in the marketplace, Museum Services offers personal, professional assistance and advice in areas including appraisals, deaccessions, acquisitions and special events.

Corporate Art Services Devoted to servicing corporations, Sotheby's Corporate Art Services Department can prepare appraisal reports, advise on acquisitions and deaccessions, manage all aspects of consignment, assist in developing arts-management strategies and create events catering to a corporation's needs.

INFORMATION ON SALES AND USE TAX RELATED TO PURCHASES AT AUCTION

To better assist our clients, we have prepared the following information on Sales and Use Tax related to property purchased at auction.

Why Sotheby's Collects Sales Tax

Virtually all State Sales Tax Laws require a corporation to register with the State's Tax Authorities and collect and remit sales tax if the corporation either establishes or maintains physical or economic presence within the state. In the states that impose sales tax, Tax Laws require an auction house, with such presence in the state, to register as a sales tax collector, and remit sales tax collected to the state. New York sales tax is charged on the hammer price, buyer's premium and any other applicable charges on any property picked up or delivered in New York, regardless of the state or country in which the purchaser resides or does business.

Where Sotheby's Collects Sales Tax

Sotheby's is currently registered to collect sales tax in the following states: Alabama, California, Colorado, Connecticut, District of Columbia, Florida, Georgia, Hawaii, Idaho, Illinois, Indiana, Iowa, Kentucky, Maine, Maryland, Massachusetts, Michigan, Minnesota, Missouri, Nebraska,

Nevada, New Jersey, New York, North Carolina, Ohio, Oklahoma, Pennsylvania, Rhode Island, South Carolina, Texas, Utah, Vermont, Washington, Wisconsin and Wyoming. For any property collected or received by the purchaser in New York City, such property is subject to sales tax at the existing New York State and City rate of 8.875%.

Sotheby's Arranged Shipping If the property is delivered into any state in which Sotheby's is registered, Sotheby's is required by law to collect and remit the appropriate sales tax in effect in the state where the property is delivered.

Client Arranged Shipping Property collected from Sotheby's New York premises by a common carrier hired by the purchaser for delivery at an address outside of New York is not subject to New York Sales Tax, but if the property is delivered into any state in which Sotheby's is registered, Sotheby's is required by law to collect and remit the appropriate sales tax in effect in the state where the property is delivered. New York State recognizes shippers such as the United States Postal Service, United Parcel Service, FedEx, or the like as "common carriers". If a purchaser hires a shipper other than a common carrier to pick up property, Sotheby's will collect New York sales tax at a rate of 8.875% regardless of the ultimate destination of the goods. If a purchaser utilizes a freight-forwarder who is registered with the Transportation Security Administration ("TSA") to deliver property outside of the United States, no sales tax would be due on this transaction.

Where Sotheby's is Not Required

to Collect Sales Tax Sotheby's is not required to collect sales tax on property delivered to states other than those listed above. If the property is delivered to a state where Sotheby's is not required to collect sales tax, it is the responsibility of the purchaser to self-assess any sales or use tax and remit it to taxing authorities in that state.

Sotheby's is not required to collect sales tax for property delivered to the purchaser outside of the United States.

Restoration and Other Services

Regardless of where the property is subsequently transported, if any framing or restoration services are performed on the property in New York, it is considered to be a delivery of the property to the purchaser in New York, and Sotheby's will be required to collect the 8.875% New York sales tax.

Certain Exemptions Most states that impose sales taxes allow for specified exemptions to the tax. For example, a registered re-seller such as a registered art dealer may purchase without incurring a tax liability, and Sotheby's is not required to collect sales tax from such re-seller. The art dealer, when re-selling the property, may be required to charge sales tax to its client, or the client may be required to self-assess sales or use tax upon acquiring the property.

Local Tax Advisors As sales tax laws vary from state to state, Sotheby's recommends that clients with questions regarding the application of sales or use taxes to property purchased at auction seek tax advice from their local tax advisors.

IMPORTANT NOTICES

Property Collection As of March 19, 2018, property that is sold, has bought in, or is to be returned to the consignor will be moved to our temporary offsite location at Crozier Fine Arts at One Star Ledger Plaza, 69 Court Street, Newark, NJ (SLP Warehouse). Certain items of property, including jewelry, watches, silver, works on panel and items valued \$10 million or more will remain at 1334 York Avenue. All other property will be moved to our temporary offsite location on the day the applicable sale concludes and is available for pickup after two business days. Invoices and statements will indicate your property's location.

Property Payment All property must be paid in full before collection or release from any Sotheby's location. Payment must be made through Sotheby's New York Post Sale Services by way of our acceptable forms of payment methods mentioned on your invoice. To arrange for payment, please contact Post Sale Services at +1 212 606 7444 or USPostSaleServices@sothebys.com. Payment will not be accepted at the offsite facility. Dealers and resale clients should fill out the appropriate forms where applicable or contact Post Sale Services with any questions.

Loss and Liability Unless otherwise agreed by Sotheby's, all sold property must be removed from any of our premises (including the SLP Warehouse) by the buyer at their expense no later than 30 calendar days following its sale. Buyers are reminded that Sotheby's liability for loss or damage to sold property shall cease no later than 30 calendar days after the date of the auction.

Collection & Shipping The SLP Warehouse requires 24 hours advanced notice for collection of property. Please arrange this through our Post Sale Services team at +1 212 606 7444 or USPostSaleServices@sothebys.com.

For in-person collections at our offsite location, please alert Post Sale Services of your proposed collection date, ensure that all outstanding invoices have been paid for, and that you or your agent have the appropriate photo identification upon arrival.

If you are using your own shipper to collect property, please provide a letter of authorization and instruct your shipper to email their bill of lading to bills@sothebys.com and ensure the correct collection location is specified.

Sotheby's can arrange for delivery of your property through one of our contracted vendors or can coordinate pick up at our offsite location with you or your shipper directly. Please contact Post Sale Services at +1 212 606 7444 or USPostSaleServices@sothebys.com to start your collection process.

Important Notice Regarding Packing

As a courtesy to purchasers who come to Sotheby's to pick up property, Sotheby's will assist in packing framed paintings. Sotheby's is unable to remove canvases off stretchers or to roll works on paper. Purchasers are advised to contact an independent painting restorer to pack works in this manner.

Notice Regarding Burmese Jadeite

Jadeite of Burmese origin less than 100 years old may not be imported into the US. Certification of non-Burmese origin will be required before importing lots containing jadeite into the US. It is the buyer's responsibility to obtain any export or import licences and/or certificates as well as any other required documentation before shipping. The inability of import of any such items shall not justify cancellation or rescission of the sale contract or any delay in payment. Please check with the specialist department if you are uncertain as to whether a lot is subject to these import restrictions, or any other restrictions on importation or exportation.

Notice Regarding Endangered Species

• Property containing certain endangered species will require a CITES license upon export from the U.S. and may require an additional license upon import into another country. There is no guarantee that such licenses will be granted. In the case of denial of any license or of delay in obtaining such licenses, the purchaser remains responsible for making on-time payment for the total purchase price.

Important Notice Regarding Clocks and Watches

Prospective buyers should satisfy themselves by personal inspection as to the condition of each lot. If the prospective buyer is not able to inspect the piece, as a courtesy to our clients, we are pleased to provide an opinion of the condition of the property on request. However, since we are not professional clock and watch restorers, any statement of opinion listed is purely subjective and is not a statement of fact. Condition reports may not specify all mechanical replacements or imperfections to the movement, case, dial, pendulum, separate base(s) or dome or any other replacements or additions to the lot. The absence of a condition report or the absence of a reference to damage in the catalogue does not imply that the lot is in good condition, working order or free from restoration or repair.

Watches in water-resistant cases have been opened to examine movements but no warranties are made that the watches are currently water-resistant.

Please note that we do not guarantee the authenticity of any individual component parts, such as wheels, hands, crowns, crystals, screws, bracelets and leather bands, since subsequent repairs and restoration work may have resulted in the replacement of original parts.

In addition, certain manufacturers will not service or repair pieces if all the component parts are not original to the piece. The refusal of a manufacturer to

service or repair a piece on this basis does not constitute grounds to rescind the sale under the Terms of Guarantee.

Furthermore, in reference to bands, we do not guarantee the material of manufacture. Please be advised that the purchaser will be responsible for complying with any applicable export and import matters, particularly in relation to endangered species and the United States Department of Fish and Wildlife Services.

Regarding Jewelry Statements in the catalogue regarding the condition of lots in this sale usually appear in the description. However, the absence of any such reference does not imply that a lot is in perfect condition or completely free from wear or imperfections. Sotheby's will be pleased to offer condition reports of the lots to potential purchasers. Please call the jewelry representatives as set forth in the front of the catalogue.

Any gemological terms used in the catalogue have the same meanings as set forth in the Federal Trade Commission's guides for the jewelry, precious metals and pewter industries. A copy of these guidelines is available from Sotheby's upon request.

Regarding Diamonds Sotheby's shares the concerns expressed by the United Nations Security Council with respect to uncut diamonds potentially coming from Angola and Sierra Leone. We will comply fully with any obligations imposed in connection with the Security Council's resolutions regarding these matters.

Treatment and Condition of Gemstones

Traditionally, gemstones have been treated by a variety of techniques to enhance color and generally to improve their appearance. Typically, rubies and sapphires have been heat treated and emeralds have been treated by oil or resin to improve color and clarity. These or other techniques, such as dyeing, irradiation, coating and impregnation, may be used on other gemstones.

Although it is widely believed that heat treatments are permanent, purchasers should assume that any treatment may not be permanent in nature and that over time special care of the stone may be required. Prospective purchasers are reminded that, unless the catalogue description specifically states that a stone is natural, we have assumed that some form of treatment may have been used and that such treatment may not be permanent. Our resale estimates reflect this assumption.

To the extent that Sotheby's has laboratory reports containing specific information on the treatment of a stone, these reports are made available for review by potential purchasers. Available reports from internationally recognized gemological laboratories will be noted in the description of the item. New forms of treatments and new scientific methods to discern them are constantly being developed. Consequently, there may be a lack of consensus among laboratories as to whether gemstones have been treated, the extent of the treatment or the permanence of the treatment.

References in the catalogue descriptions to certificates or reports issued by gemological laboratories are included only for the information of bidders and Sotheby's accepts no responsibility for the accuracy, terms or information contained in such certificates or reports.

Statements in the catalogue regarding the condition of lots in this sale usually appear in the description. However, the absence of any such reference does not imply that a lot is in perfect condition or completely free from wear or imperfections. Sotheby's will be pleased to offer condition reports on all lots of the sale to potential purchasers. Please call the jewelry representatives set forth in the front of the catalogue.

Gemological Certificates and Reports

References in the catalogue descriptions to certificates or reports issued by gemological laboratories are provided only for the information of bidders, and Sotheby's does not guarantee and accepts no responsibility for the accuracy, terms or information contained in such certificates or reports. Please also note that laboratories may differ in their assessment of a gemstone (including its origin and presence, type and extent of treatments) and their certificates or reports may contain different results.

Certificates of Authenticity Various manufacturers may not issue certificates of authenticity upon request. Except as specifically noted in the catalogue, Sotheby's will not be required to furnish the purchaser with a certificate of authenticity from the manufacturer at any time. Unless the requirements for a rescission of the sale under the Terms of Guarantee are satisfied, the failure of a manufacturer to issue a certificate will not constitute grounds to rescind the sale.

Country of Origin While Sotheby's attempts to obtain accurate information on the country of origin of the gemstones, in accordance with paragraph 1 of the Conditions of Sale, Sotheby's does not guarantee the correctness of the catalogue or other description of the gemstones including the country of origin.

Stone Weights Weights of stones printed in the catalogue and preceded by the words "stated to be," "about" or "approximately" are not guaranteed by Sotheby's. Prospective buyers are reminded that all lots are sold as shown.

Regarding Condition of Watches

Prospective buyers should satisfy themselves by personal inspection as to the condition of each lot. If the prospective buyer is not able to inspect the piece, as a courtesy to our clients, we are pleased to provide an opinion of the condition of the property on request. However, since we are not professional watch restorers, any statement of opinion listed is purely subjective and is not a statement of fact. Condition reports may not specify all mechanical replacements or imperfections to the movement, case,

dial, pendulum, separate base(s) or dome or any other replacements or additions to the lot. The absence of a condition report or the absence of a reference to damage in the catalogue does not imply that the lot is in good condition, working order or free from restoration or repair. Watches in water-resistant cases have no warranties that are made that the watches are currently water-resistant. Please note that we do not guarantee the authenticity of any individual component parts, such as wheels, hands, crowns, crystals, screws, bracelets and leather bands, since subsequent repairs and restoration work may have resulted in the replacement of original parts.

In addition, certain manufacturers will not service or repair pieces if all of the component parts are not original to the piece. The refusal of a manufacturer to service or repair a piece on this basis does not constitute grounds to rescind the sale under the Terms of Guarantee.

Furthermore, in reference to bands, we do not guarantee the material of manufacture. Please be advised that the purchaser will be responsible for complying with any applicable export and import matters, particularly in relation to endangered species and the United States Department of Fish and Wildlife Services.

Payments and Pick-Up All payments to be made at Client Accounting, 1334 York Avenue. See below for dates and times.

Pick-Up: From the Jewelry Department, 6th Floor, 1334 York Avenue.

The schedule for property pick-up will be as follows:

Thursday, 6 June
10:00 am - 5:00 pm
Friday 7 June
10:00 am - 5:00 pm
Monday, 10 June
10:00 am - 5:00 pm
Tuesday, 11 June
10:00 am - 5:00 pm
Wednesday, 12 June
10:00 am - 5:00 pm

Photography

SquareMoose
New York
+1 212 643 2505

International Departments

For a full listing of our offices and salerooms worldwide with detailed information on all of Sotheby's services, visit sothebys.com

David Bennett
Worldwide Chairman,
International Jewelry Division

Gary Schuler
Chairman,
North and South America

Daniela Mascetti
Chairman,
Jewelry, Europe

Patti Wong
Chairman, Asia
Chairman, Sotheby's Diamonds

Laurence Nicolas
Global Managing Director,
Jewelry and Watches

Maria Kelly
Deputy Managing Director,
Live Auction
Jewelry and Watches

Josh Pullan
Deputy Managing Director,
Digital and New Initiatives
Jewelry and Watches

Andres White Correal
Director of International
Business Development

Yang Bu
Business Director,
North America

Rebecca Spencer
Business Director,
Europe

Scott Roworth
Business Director,
Asia

NORTH AMERICA

NEW YORK

Gary Schuler
Frank Everett
Catharine Becket
Robin Wright
Alexander Eblen
Kendall Reed
Joanna Gong
+1 212 606 7392

Sotheby's Diamonds
+1 212 894 1400

WEST

Carol Elkins
+1 415 772 9027
Quig Bruning
+1 310 274 0340
Yvonne Teng
+1 310 786 1864

EUROPE

GENEVA

David Bennett
Daniela Mascetti
Jessica Wyndham
Olivier Wagner
Benoit Repellin

Prince Abdul'Aziz Toussoun ‡
Associate, Europe
+41 22 908 48 49

LONDON

Kristian Spofforth
Nikita Binani
Justin Roberts
Johanna Seehuusen
Andres White Correal
+44 20 7293 6409

MILAN

Sara Miconi
+39 02 295 00201
Daniela Mascetti
+41 22 908 48 49

PARIS

Magali Teisseire
Gabriella Mantegani
+33 1 5305 5337

AMSTERDAM

Albertine Verlinde
+31 20 550 2204

BRUSSELS

Marianna Lora
+32 2 648 0080

LUGANO

Iris Fabbri
+41 91 993 30 60

MADRID

Andres White Correal
+34 91 576 5714

MONACO

Douglas Walker
+377 93 30 8880

MUNICH

Heinrich Graf von Spreti
+49 89 2909 5121

ROME

Luisa Lepri
+39 06 699 41791

TEL AVIV

Sigal Mordechai
+972 3 560 1666

DUBAI

Sophie Stevens
+44 78 4036 7595

VIENNA

Andrea Jungmann
+43 1 512 4772

ASIA

HONG KONG

Yvonne Chu
Shanne Ng
Cristel Tan
Diana Chang
Uni Kim
Jane Ki
Quek Chin Yeow ‡
Flora Wong ‡
Willy Wong ‡
+852 2822 8112

Sotheby's Diamonds
Lisa Chow
+852 2822 8113

CHINA

BEIJING

Lei Tang
+86 10 6408 8890

SHANGHAI

Rachel Shen
+86 21 6288 7500

INDONESIA

Jasmine Prasetio
+62 21 5797 3603

JAPAN

Aki Uemura
+81 3 3230 2755

MALAYSIA

Walter Cheah ‡
+60 12 208 3917

PHILIPPINES

Angela Hsu
+63 917 815 0075

SINGAPORE

Esther Seet
+65 6732 8239

TAIWAN

Wendy Lin
Nicolette Chou
+886 2 2757 6689

THAILAND

Wannida Saetieo
+66 2 286 0788

Consultant ‡

Diamond List

COLOR	CLARITY	CARAT WEIGHT	SHAPE	LOT
D	VVS1	1.05	Oval	60
D	SI2	15.13	Pear	208
E	I1	6.06	Pear	178
E	SI2	15.88	Emerald-Cut	209
F	VVS1	5.07	Cushion	53
F	VS1	7.04	Rectangular Modified Brilliant	63
G	VVS2	3.27	Round	97
G	VVS1	5.16	Cushion	109
G	VS2	4.21	Pear	188
H	VVS2	5.04	Emerald-Cut	58
H	VVS2	6.21	Marquise	67
I	SI1	6.94	Cushion	93
I	VVS1	3.38	Rectangular Modified Brilliant	179
J	SI1	6.02	Old European	27
J	VS1	4.19	Emerald-Cut	44
J	SI1	10.06	Rectangular Step-Cut	182
J	SI2	7.39	Pear	201
K	VS1	6.22	Emerald-Cut	36
L	SI1	7.59	Round	39
L	VS2	22.41	Cushion	199
I/J	VS1/VS2	2.06/2.00	Round	59
Fancy Light Purplish Pink	SI2	6.51	Cut-Cornered Rectangular Mixed-Cut	203
Fancy Vivid Yellow	VVS1/VVS1	3.00/3.00	Cut-Cornered Rectangular Modified Brilliant	62
Fancy Intense Yellow	SI1	4.24	Emerald-Cut	30
Fancy Intense Yellow	VS2	4.01	Oval	61
Fancy Deep Brownish Orangy Yellow	I1	2.40	Round	151
Fancy Light Yellow/Fancy Light Yellow	SI1/VS2	10.00/9.04	Old Mine	202

Colored Stone List

RUBY					
LOT	SHAPE	CARAT WEIGHT	ORIGIN	TREATMENT	LAB
23	Oval	Approx. 3.30	Burmese	Heat	AGL
29	Cushion	4.74	Thai	Heat; In-Filling	AGL

EMERALD					
LOT	SHAPE	CARAT WEIGHT	ORIGIN	TREATMENT	LAB
11	Emerald-Cut	5.65	Colombian	Minor; Traditional	AGL
12	Emerald-Cut	Approx. 4.20	Colombian	Minor; Traditional	AGL
57	Emerald-Cut	Approx. 2.50	Colombian	Insignificant; Traditional	AGL
64	Cabochon	8.74	Colombian	Minor; Traditional	AGL
107	Emerald-Cut	8.06	Colombian	Minor; Traditional	AGL
112	Emerald-Cut	Approx. 8.50	Colombian	Insignificant; Traditional	AGL
129	Cushion	Total 13.39	Colombian	Minor; Traditional	AGL
196	Octagonal	9.80	Colombian	Minor; Traditional	AGL
200	Emerald-Cut	62.03	Colombian	Minor; Traditional	AGL
205	Emerald-Cut	39.01	Colombian	Minor; Modern	AGL

SAPPHIRE					
LOT	SHAPE	CARAT WEIGHT	ORIGIN	TREATMENT	LAB
35	Cushion	11.01	Ceylon	No Heat	AGL
43	Cushion	14.81	Ceylon	Low Heat	AGL
54	Oval	4.49	Burmese	No Heat	AGL
72	Cushion	27.71	Ceylon	Heat	AGL
117	Oval	22.00	Ceylon	No Heat	AGL
172	Octagonal	Approx. 8.80	Kashmir	No Heat	Gübelin
186	Cushion	6.97	Burmese	No Heat	AGL & Gübelin
195	Oval	16.01	Ceylon	No Heat	AGL

Diamond Clarity Grading

Clarity grading relates to the impurities in a diamond. All clarity grading is carried out under a 10x magnification. The more impurities in a diamond the lower the price per carat.

FL	Flawless	No blemishes or inclusions
IF	Internally Flawless	No inclusions and only insignificant blemishes.
VVS1 & VVS2	Very Very Slightly Included	Extremely difficult to see, visible only from the back of the stone, or small and shallow enough to be removed easily by repolishing. In VVS2, inclusions are still very difficult to see.
VS1 & VS2	Very Slightly Included	Still difficult to see with the untrained eye.
SI1 & SI2	Slightly Included	Easy (SI1) or very easy (SI2) to see with a 10x lens. When these have been located with a 10x lens, look at the stone with the naked eye and the inclusions can sometimes be spotted
I1, I2 & I3	Imperfect	May be eye-visible face up without the aid of a lens. In I3, they may threaten the stones durability.

Glossary of Terms

The following are examples of the terminology used in this catalogue. Please note that all statements made in this catalogue are made subject to the provisions of the Conditions of Sale and Terms of Guarantee printed in this catalogue:

SIGNATURES

BOLD TYPE HEADING

When the maker's name appears in Bold Type Heading in the catalogue description, in Sotheby's opinion, the piece is by the named jeweler.

NAME OF JEWELER

When we state the name of a maker in the catalogue description below the Bold Type Heading, we mean that, in Sotheby's opinion, although unsigned, the piece is by the named jeweler.

MOUNTING BY

When we state in the catalogue description below the Bold Type Heading "Mounting by_____"; we mean that, in Sotheby's opinion, the mounting is by the jeweler, and the gemstones were not supplied by the jeweler or the piece has been altered in some way after its manufacture.

Diamond Color Grading

GIA
D
E
F
G
H
I
J
K
L
M
↓
Z
Z+

The top color grades, D, E, F, for a diamond is when it looks colorless against a white background.

In near colorless diamonds, G, H, I, there is a slight trace of color which will not be apparent to the untrained eye. Stones 0.50Ct or less will look colorless.

Diamonds graded J, K, L, will have notable traces of color. Small stones in this range will 'face up' colorless when mounted but larger stones will be tinted.

Diamonds graded M-Z will display a yellowish tint even to the untrained eye.

Z+ color grade indicates that the diamond is of fancy color and therefore fall into a different price bracket.

Ring Sizes

Metric	French/Japanese	English	American
37.8252	-	A	1/2
38.4237	-	A1/2	3/4
39.0222	-	B	1
39.6207	-	B1/2	11/4
40.2192	-	C	11/2
40.8177	-	C1/2	13/4
41.4162	1	D	2
42.0147	2	D1/2	21/4
42.6132	-	E	21/2
43.2117	3	E1/2	23/4
43.8102	4	F	3
44.4087	-	F1/2	33/4
45.0072	5	G	31/4
45.6057	-	G1/2	31/2
46.2042	6	H	33/4
46.8027	-	H1/2	4
47.4012	7	I	41/4
47.9997	8	I1/2	41/2
48.5982	-	J	43/4
49.1967	9	J1/2	5
49.7952	10	K	51/4
50.3937	-	K1/2	51/2
50.9922	11	L	53/4
51.5907	-	L1/2	6
52.1892	12	M	61/4
52.7877	13	M1/2	61/2
53.4660	-	N	63/4
54.1044	14	N1/2	7
54.7428	15	O	7
55.3812	-	O1/2	71/4
56.0196	16	P	71/2
56.6580	-	P1/2	73/4
57.2964	17	Q	8

Index of Makers

Maker	Lot	Maker	Lot
Aletto Brothers	47, 102, 138, 153	Oscar Heyman & Brothers	22
Arthur King	24, 167		
Boucheron	4, 136	Paul Flato	9
Buccellati	10, 79, 81, 82, 85, 86, 87	Schlumberger for Tiffany & Co.	17, 72, 124, 126, 127, 128, 157, 158, 169, 170
Bulgari	73, 74, 75, 115	Seaman Schepps	122, 125, 193
Cartier	51, 90, 100, 104, 129, 131, 134, 156, 171, 184	Taffin	163, 202
Castellani	69	Tiffany & Co.	42, 48, 53, 91, 109, 111, 154, 185, 187
Chaumet	118		
Chopard	95	Van Cleef & Arpels	6, 14, 21, 30, 33, 34, 71, 78, 94, 96, 106, 137, 139, 146, 148, 149, 155, 161, 165, 166, 173, 174
David Webb	1, 2, 5, 7, 8, 15, 16, 26, 66, 67, 68, 80, 84, 92, 116, 119, 140, 143, 150, 159, 160	Verdura	25, 121, 123, 132
de Grisogono	20		
E. M. Gattle & Co.	197, 198		
Graff	46, 186		
Gucci	28		
Harry Winston	117, 120, 177, 178, 205, 210		
Henri Martin	142		
Ilias Lalaounis	3		
Jean Schlumberger	168		
L. Vettori	89		
M. Gerard	70		
Marcus & Co.	190		
Marianne Ostier	108, 133, 209		
Marina B	13		

BOARD OF DIRECTORS

Domenico De Sole

Chairman of the Board

The Duke of Devonshire

Deputy Chairman of the Board

Tad Smith

President and

Chief Executive Officer

Jessica Bibliowicz

Linus W. L. Cheung

Kevin Conroy

Daniel S. Loeb

Marsha E. Simms

Diana L. Taylor

Dennis M. Weibling

Harry J. Wilson

David Schwartz

Corporate Secretary

**SOTHEBY'S EXECUTIVE
MANAGEMENT**

Jill Bright

Human Resources

& Administration

Worldwide

Amy Cappellazzo

Chairman

Fine Art Division

Valentino D. Carlotti

Business Development

Worldwide

John Cahill

Chief Commercial Officer

Worldwide

Kevin Ching

Chief Executive Officer

Asia

Ken Citron

Operations & Chief

Transformation Officer

Worldwide

Lauren Gioia

Communications

Worldwide

David Goodman

Digital Development

& Marketing

Worldwide

Mike Goss

Chief Financial Officer

Jane Levine

Chief Compliance Counsel

Worldwide

Laurence Nicolas

Managing Director

Jewelry & Watches

Worldwide

Jonathan Olsoff

General Counsel

Worldwide

Jan Prasens

Managing Director

Europe, Middle East, Russia,

India and Africa

Allan Schwartzman

Chairman

Fine Art Division

Patti Wong

Chairman

Asia

**SOTHEBY'S INTERNATIONAL
COUNCIL**

Robin Woodhead

Chairman

Jean Fritts

Deputy Chairman

John Marion

Honorary Chairman

Juan Abelló

Judy Hart Angelo

Anna Catharina Astrup

Nicolas Berggruen

Philippe Bertherat

Lavinia Borromeo

Dr. Alice Y.T. Cheng

Laura M. Cha

Halit Cingilioğlu

Jasper Conran

Henry Cornell

Quinten Dreesmann

Ulla Dreyfus-Best

Jean Marc Etlin

Tania Fares

Comte Serge de Ganay

Ann Getty

Yassmin Ghandehari

Charles de Gunzburg

Ronnie F. Heyman

Shalini Hinduja

Pansy Ho

Prince Aynn Aga Khan

Catherine Lagrange

Edward Lee

Jean-Claude Marian

Batia Ofer

Georg von Opel

Marchesa Laudomia Pucci Castellano

David Ross

Patrizia Memmo Ruspoli

Rolf Sachs

René H. Scharf

Biggi Schuler-Voith

Judith Taubman

Olivier Widmaier Picasso

The Hon. Hilary M. Weston,

CM, CVO, OOnt

CHAIRMAN'S OFFICE**AMERICAS**

Lisa Dennison

Benjamin Doller

George Wachter

Thomas Bompard

Lulu Creel

Nina del Rio

Mari-Claudia Jimenez

Brooke Lampley

Gary Schuler

Simon Shaw

Lucian Simmons

August Uribe

EUROPE

Oliver Barker

Helena Newman

Mario Tavella

Alex Bell

Michael Berger-Sandhofer

David Bennett

Lord Dalmeny

Claudia Dwek

Edward Gibbs

George Gordon

Franka Haiderer

Henry Howard-Sneyd

Caroline Lang

Cedric Lienart

Daniela Mascetti

Wendy Philips

Lord Poltimore

Samuel Valette

Albertine Verlinde

Roxane Zand

ASIA

Patti Wong

Nicolas Chow

Lisa Chow

Jen Hua

Yasuaki Ishizaka

Wendy Lin

Rachel Shen



Sotheby's EST. 1744
Collectors gather here.